

Winde _
Originalteilleiste

↘ DE



Winch _
Original parts list

↘ EN

STAHL
Crane Systems





Notizen
Notes



Hubmotor	4	Hoist motor	4
Getriebe	10	Gear	10
Bremse	11	Brake	11
Seiltrommel	12	Rope drum	12
Seilaufhängung 80t	13	Rope suspension 80t	13
Überlastabschaltung 80t	14	Overload cut-off device 80t	14
Seilaufhängung 100t	15	Rope suspension 100t	15
Überlastabschaltung 100t	16	Overload cut-off device 100t	16
Seilaufhängung 125/160t	17	Rope suspension 125/160t	17
Hakenflasche	18	Bottom hook block	18
Fahrwerk OE-S	21	Trolley OE-S	21
Getriebeendschalter	23	Gear limit switch	23
Steuergerät	23	Control pendant	23
Fahrtriebe	24	Travel drives	24
Drehmomentstütze	40	Torque support	40

Austausch und Reparaturen nur von geschultem Personal ausführen lassen.
Die Angaben in der Spalte "Benennung" dienen nur internen Vorgängen.

Replacement and repairs may only be carried out by trained personnel.
The information in the column "Designation" is only for internal use.

Bitte immer die Fabrik-Nr. des Hebezeuges angeben.

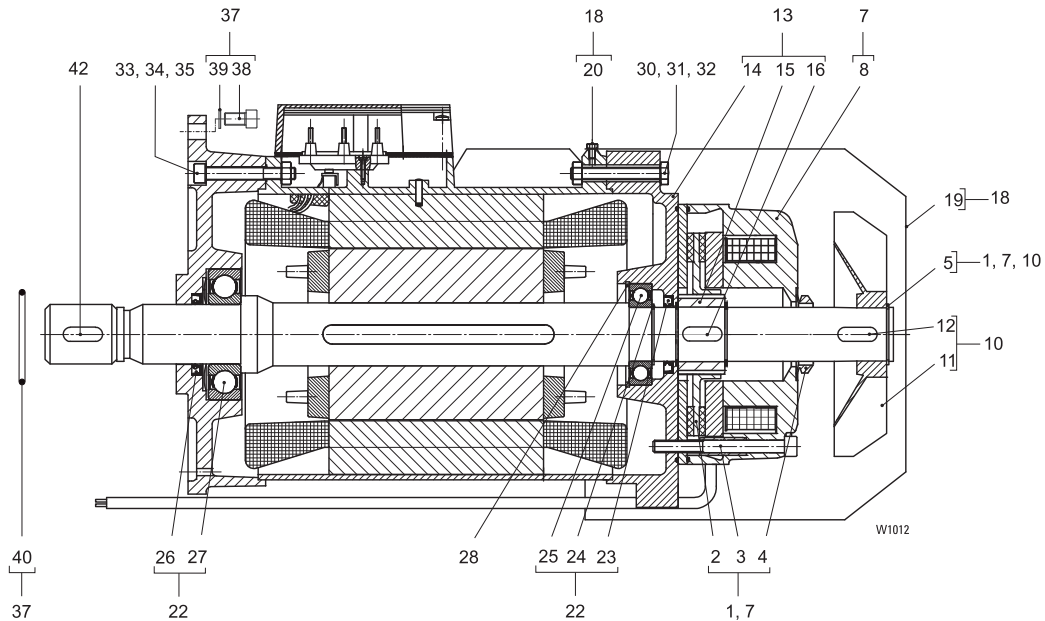
Please always state hoist serial number.

Veillez s.v.p. toujours indiquer le numéro de fabrication du palan..

Por favor indicar siempre el número de fabricación del poliaστο.



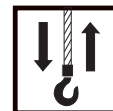
12/2H73



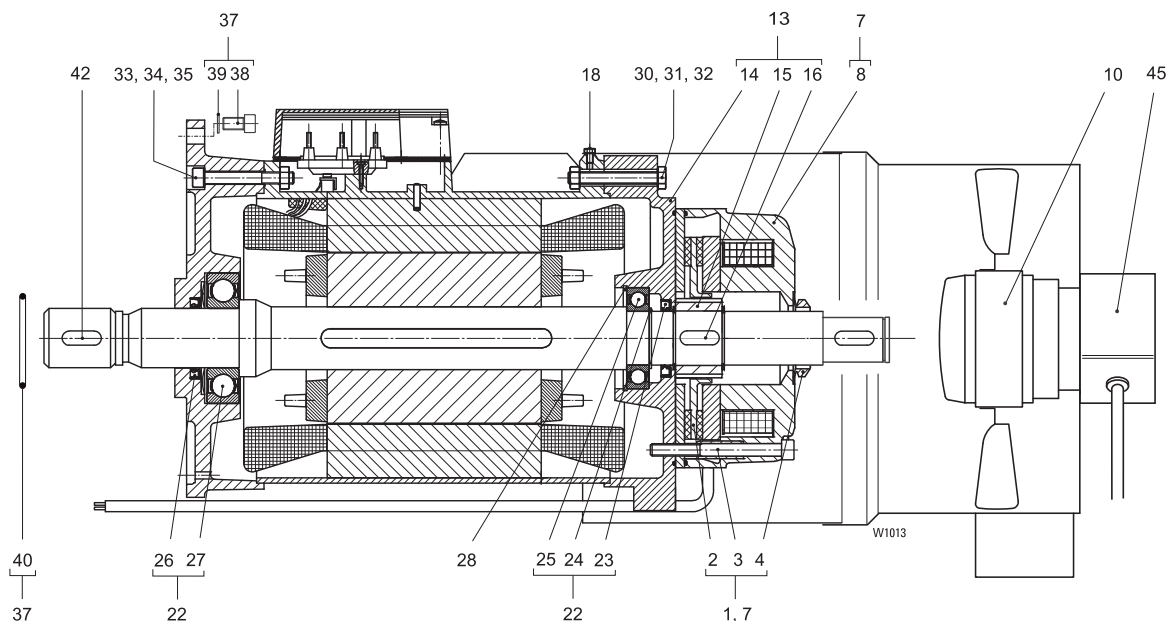
Pos	Teil-Nummer Part-Number	Stück Piece	Beschreibung Description	Benennung	Designation
	27 270 24 11 0	1	SHW8	1)2)	Motor Motor
1	04 430 67 65 0	1	(Pos.2-5)	Bremsrotor Ersatzteilset	Brake rotor spare part set
2	1	M150	Bremsrotor	Brake rotor
3	3	M8x100	Zyl.-Schraube	Socket head cap screw
4	3	M8x110		
5	1		Dichtring V-Seal	Sealing ring V-Seal
7	1	45x1,75	Sicherungsring	Circlip
	04 430 76 65 0	1	104-120 V	3) (Pos.1, 8)	220-460 V 50Hz 4)
	04 430 7765 0	1	130-150 V	3) (Pos.1, 8)	480-525 V 50Hz 4)
	04 430 78 65 0	1	156-180 V	3) (Pos.1, 8)	575-720 V 50Hz 4)
8	1		Bremse	Brake
10	04 430 74 65 0	1	(Pos.5, 11, 12)	Lüfterrad Ersatzteilset	Fan wheel spare part set
11	1		Lüfterrad	Fan wheel
12	1		Passfeder	Feather key
13	05 430 24 65 0	1	(Pos.14-16)	Motordeckel Ersatzteilset	Motor cover spare part set
14	1		Motordeckel	Motor cover
15	1		Nabe	Hub
16	1	B14x9x30	Passfeder	Feather key
18	04 430 65 65 0	1	DIN 6885	Lüfterhaube Ersatzteilset	Fan cowling spare part set
19	1		Lüfterhaube	Fan cowling
20	4	M5x10	Linsenschraube	Lenshead screw
22	04 430 66 65 0	1	(Pos.4, 23-27)	Lager und Dichtungen	Bearings and seals
23	1	A45x65x8	Wellendichtring	Shaft seal
24	1	45x1,75	Sicherungsring	Circlip
25	1	6209-2ZJC3	Rillenkugellager	Grooved ball bearing
26	1	6310-2ZJC3	Rillenkugellager	Grooved ball bearing
27	1	A50x68x8	Wellendichtring	Shaft seal
28	506 109 0	1	85x3	Sicherungsring	Circlip
30	500 829 0	4	M10x120	Skt-Schraube	Hexagon head cap screw
31	567 241 0	4	10	Federring	Spring washer
32	506 984 0	4	M10	Mutter	Nut
33	500 437 0	4	M10x80	Zyl-Schraube	Socket head cap screw
34	567 241 0	4	10	Federring	Spring washer
35	506 984 0	4	M10	Mutter	Nut
37	04 430 32 65 0	1	(Pos.38-40)	Schrauben Ersatzteilset	Screws spare part set
38	4	M12x35	Zyl.-Schraube	Socket head screw
39	4	12	Sicherungsscheibe	Disc
40	1	95x2	Runddichtring	Round sealing ring
42	537 022 0	1	AS 32x18x280	Passfeder	Feather key
	537 023 0	1	AS 36x20x320		
	537 019 0	1	AS 40x22x320		

1) Bitte Betriebsspannung und Frequenz angeben.
2) Pos.37 immer mitbestellen
3) Spulenspannung
4) Betriebsspannung Motor

1) Please state operating voltage and frequency.
2) Always include item 37 in order
3) Coil voltage
4) Operating voltage motor



4H73 (FU)
(Fremdbelüftung / Forced ventilation)



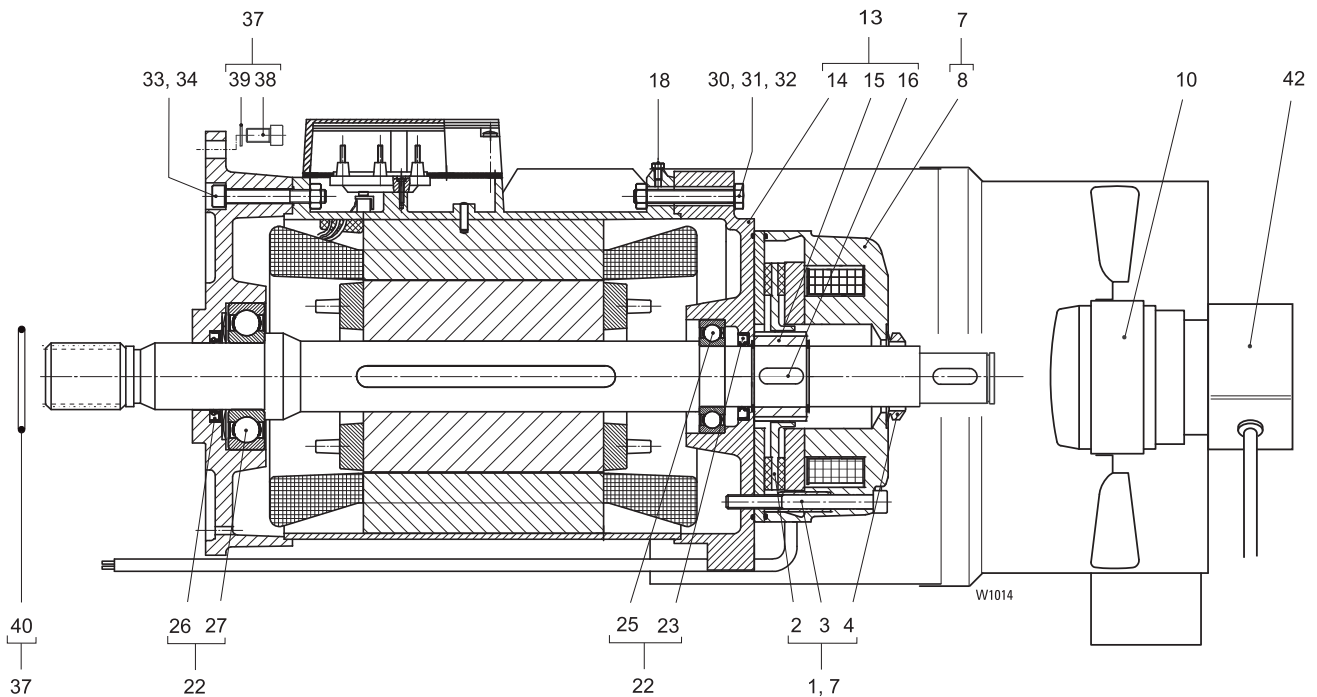
Pos	Teil-Nummer Part-Number	Stück Piece	Beschreibung Description	Benennung Designation	Designation	
	27 270 25 11 0	1	SHW8	1)2)3)	Motor	Motor
1	04 430 92 65 0	1		(Pos.2-5)	Bremsrotor Ersatzteilset	Brake rotor spare part set
2	...	1		M150	Bremsrotor	Brake rotor
3	...	3	M8x100	ISO 4762-8.8	Zyl.-Schraube	Socket head cap screw
4	...	3	M8x110	ISO 4762-8.8		
4	...	1			Dichtring V-Seal	Sealing ring V-Seal
7	04 430 94 65 0	1	104-120 V	4) (Pos.1, 8) 220-460 V 50Hz	5) Bremse Ersatzteilset	Brake spare part set
	04 430 95 65 0	1	180-207 V	4) (Pos.1, 8) 380-460 V 50Hz	5)	
8	...	1			Bremse	Brake
10	576 006 0	1			Fremdbelüftung	Forced vantilation
13	05 430 24 65 0	1		(Pos.14-16)	Motordeckel Ersatzteilset	Motor cover spare part set
14	...	1			Motordeckel	Motor cover
15	...	1			Nabe	Hub
16	...	1	B14x9x30	DIN 6885	Passfeder	Feather key
18	505 044 0	4	M5x10	ISO 4075-4.8	Linse	Head screw
22	04 430 66 65 0	1		(Pos.4, 23-27)	Lager und Dichtungen	Bearings and seals
23	...	1	A45x65x8	DIN 3760	Wellendichtring	Shaft seal
24	...	1	45x1,75	DIN 471	Sicherungsring	Circlip
25	...	1	6209-2ZJC3	DIN 625	Rillenkugellager	Grooved ball bearing
26	...	1	6310-2ZJC3	DIN 625	Rillenkugellager	Grooved ball bearing
27	...	1	A50x68x8	DIN 3760	Wellendichtring	Shaft seal
28	506 109 0	1	85x3	DIN 472	Sicherungsring	Circlip
30	500 829 0	4	M10x120	ISO 4014	Skt-Schraube	Hexagon head cap screw
31	567 241 0	4	10		Federring	Spring washer
32	506 984 0	4	M10	ISO 4032-8	Mutter	Nut
33	500 437 0	4	M10x80	ISO 4762-8.8	Zyl.-Schraube	Socket head cap screw
34	567 241 0	4	10		Federring	Spring washer
35	506 984 0	4	M10	ISO 4762-8.8	Mutter	Nut
37	04 430 32 65 0	1		(Pos.38-40)	Schrauben Ersatzteilset	Screws spare part set
38	...	4	M12x35	ISO 4762	Zyl.-Schraube	Socket head screw
39	...	4	12	S12	Sicherungsscheibe	Disc
40	...	1	95x2	NB	Runddichtring	Round sealing ring
42	537 022 0	1	AS 32x18x280	DIN 6885	Passfeder	Feather key
	537 023 0	1	AS 36x20x320	DIN 6885		
	537 019 0	1	AS 40x22x320	DIN 6885		
45	579 249 0	1			Drehimpulsgeber	Rotary pulse encoder

- 1) Bitte Betriebsspannung und Frequenz angeben.
- 2) Pos.37 immer mitbestellen
- 3) Bei Bestellung bitte mit "Fremdbelüftung" angeben.
- 4) Spulenspannung
- 5) Betriebsspannung Motor

- 1) Please state operating voltage and frequency.
- 2) Always include item 37 in order
- 3) Please state "forced ventilation" when ordering.
- 4) Coil voltage
- 5) Operating voltage motor



4H82 (FU)
(Fremdbelüftung / Forced ventilation)



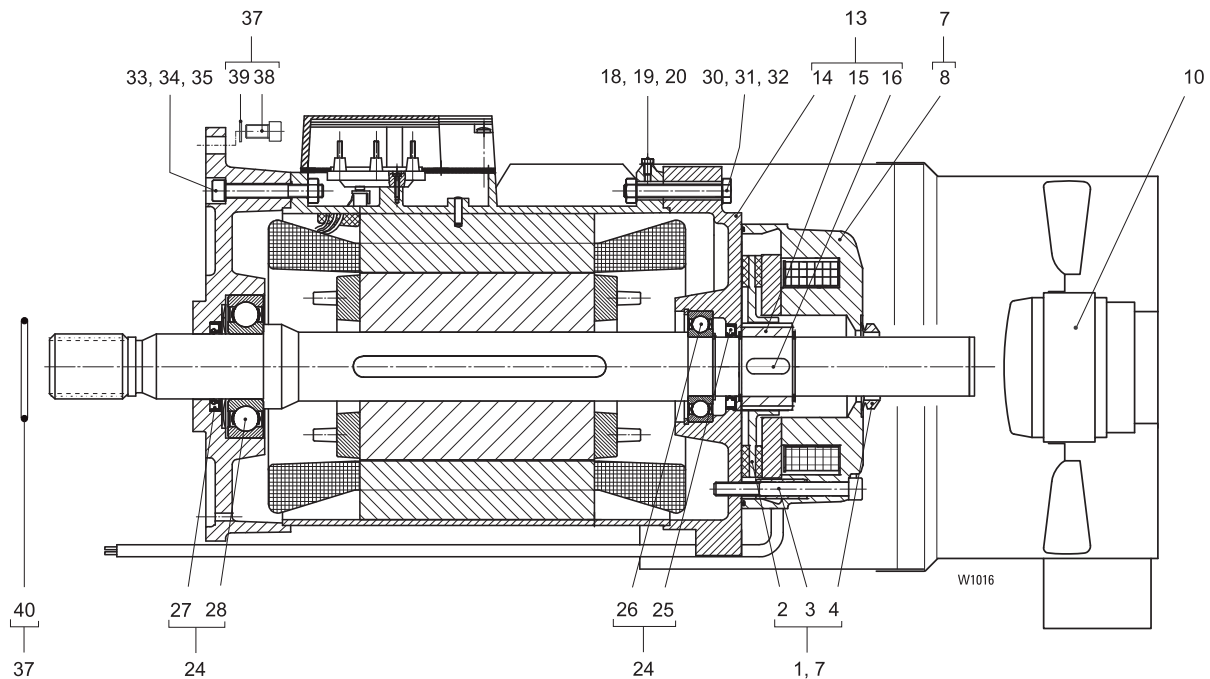
Pos	Teil-Nummer Part-Number	Stück Piece	Beschreibung Description	Benennung Designation	Designation		
	28 270 03 11 0	1	SHW8	1)2)3)	Motor	Motor	
1	05 430 00 65 0	1		(Pos.2-5)	Bremsrotor Ersatzteilset	Brake rotor spare part set	
2	1			Bremsrotor	Brake rotor	
3	3	M10x110	ISO 4762-8.8	Zyl.-Schraube	Socket head cap screw	
4	1			Dichtring V-Seal	Sealing ring V-Seal	
7	05 430 02 65 0	1	104 - 120 V	4) (Pos.1, 8)	220 - 240 V 50Hz	5) Bremse Ersatzteilset	Brake spare part set
	05 430 03 65 0	1	180 - 207 V	4) (Pos.1, 8)	380 - 460 V 50Hz	5)	
8	1			Bremse	Brake	
10	576 007 0	1			Fremdbelüftung	Forced ventilation	
13	05 430 25 65 0	1		(Pos.14-16)	Motordeckel Ersatzteilset	Motor cover spare part set	
14	1			Motordeckel	Motor cover	
15	1			Nabe	Hub	
16	1	B9x14x40	DIN 6885	Passfeder	Feather key	
18	505 044 0	4	M5x10	ISO 4075-4.8	Linsenschraube	Lenshead screw	
22	05 430 07 65 0	1		(Pos.4, 23-27)	Lager und Dichtungen	Bearing and seals	
23	1	A50x72x8	DIN 3760	Wellendichtring	Shaft seal	
25	1	6210-ZJC3	DIN 625	Rillenkugellager	Grooved ball bearing	
26	1	A65x85x10	DIN 3760	Wellendichtring	Shaft seal	
27	1	6213-ZJC3	DIN 625	Rillenkugellager	Grooved ball bearing	
30	501 001 0	4	M10x65	ISO 4762	Zyl.-Schraube	Socket head cap screw	
31	567 243 0	4	10		Federring	Spring washer	
32	567 262 0	4	M10	ISO 272	Mutter	Nut	
33	500 437 0	4	M10x80	ISO 4762-8.8	Zyl.-Schraube	Socket head cap screw	
34	567 262 0	4	M10	ISO 272	Mutter	Nut	
37	05 430 06 65 0	1		(Pos.38-40)	Schrauben Ersatzteilset	Screws spare part set	
38	4	M16x40	ISO 4762-8.8	Zyl.-Schraube	Socket head cap screw	
39	4	S16		Sicherungsscheibe	Locking disc	
40	1	95x2		Runddichtring	Round sealing ring	
42	579 249 0	1			Drehimpulsgeber	Rotary pulse encoder	

- 1) Bitte Betriebsspannung und Frequenz angeben.
- 2) Pos.37 immer mitbestellen
- 3) Bei Bestellung bitte mit "Fremdbelüftung" angeben.
- 4) Spulenspannung
- 5) Betriebsspannung Motor

- 1) Please state operating voltage and frequency.
- 2) Always include item 37 in order
- 3) Please state "forced ventilation" when ordering.
- 4) Coil voltage
- 5) Operating voltage motor



24/4H92



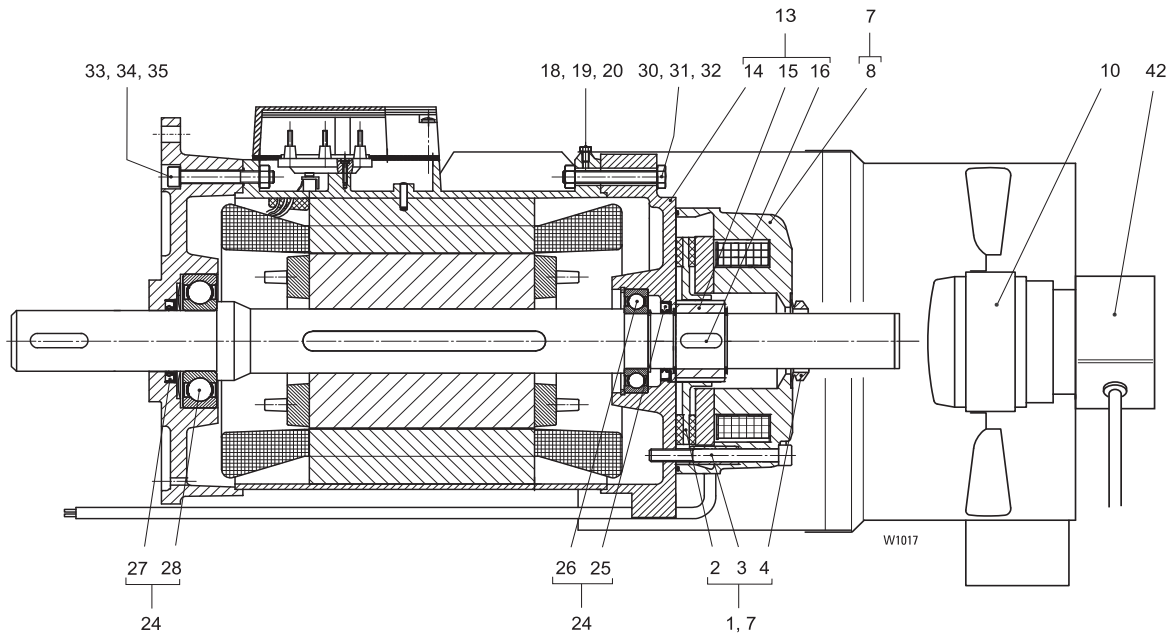
Pos	Teil-Nummer Part-Number	Stück Piece	Beschreibung Description	Benennung Designation	Designation		
	29 270 03 11 0	1	SHW8	1)2)	Motor	Motor	
1	05 430 10 65 0	1	(Pos.2-4) Gr. 500	Bremsrotor Ersatzteilset	Brake rotor spare part set		
2	1		Bremsrotor	brake rotor		
3	3	M10x110	Zyl.-Schraube	Socket head cap screw		
4	1		Dichtring V-Seal	Sealing ring V-Seal		
7	05 430 12 65 0	1	104 - 120 V 3)	(Pos.1, 8) 380 - 460 V 50Hz 4)	Bremsersatzteilset	Brake spare part set	
	05 430 29 65 0	1	130 - 150 V 3)				480 - 525 V 50Hz 4)
	05 430 30 65 0	1	156 - 180 V 3)				575 - 720 V 50Hz 4)
8	1		Bremse	Brake		
10	576 008 0	1		Fremdbelüftung	Forced ventilation		
13	05 430 26 65 0	1		Motordeckel Ersatzteilset	Motor cover spare part set		
14	1		Motordeckel	Motor cover		
15	1		Nabe	Hub		
16	1	B18x11x60	Passfeder	Feather key		
18	567 239 0	4	M8/D10x8	Skt.-Schraube	Hexagon head cap screw		
19	567 240 0	4	A10x14x2,5	Tülle	Grommet		
20	507 157 0	4	10	Scheibe	Disc		
24	05 430 16 65 0	1	(Pos.4, 25-28)	Lager und Dichtungen	Bearings and seals		
25	1	A60x80x8	Wellendichtring	Shaft seal		
26	1	6212-ZJC3	Rillenkugellager	Grooved ball bearing		
27	1	A65x85x10	Wellendichtring	Shaft seal		
28	1	6213-ZJC3	Rillenkugellager	Grooved ball bearing		
	4	M6x60	Zyl.-Schraube	Socket head cap screw		
30	500 039 0	4	M12x75	Skt.-Schraube	Hexagon head cap screw		
31	567 242 0	4	12	Federring	Spring washer		
32	567 263 0	4	M12	Mutter	Nut		
33	500 040 0	4	M12x90	Zyl.-Schraube	Socket head cap screw		
34	567 242 0	4	12	Federring	Spring washer		
35	567 263 0	4	M12	Mutter	Nut		
37	05 430 06 65 0	1	(Pos.38-40)	Schrauben Ersatzteilset	Screws spare part set		
38	4	M16x40	Zyl.-Schraube	Socket head cap screw		
39	4	S16	Sicherungsscheibe	Locking disc		
40	1	95x2	Runddichtring	Round sealing ring		

1) Bitte Betriebsspannung und Frequenz angeben.
2) Pos.37 immer mitbestellen
3) Spulenspannung
4) Betriebsspannung Motor

1) Please state operating voltage and frequency.
2) Always include item 37 in order
3) Coil voltage
4) Operating voltage motor



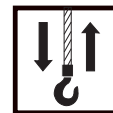
4H93



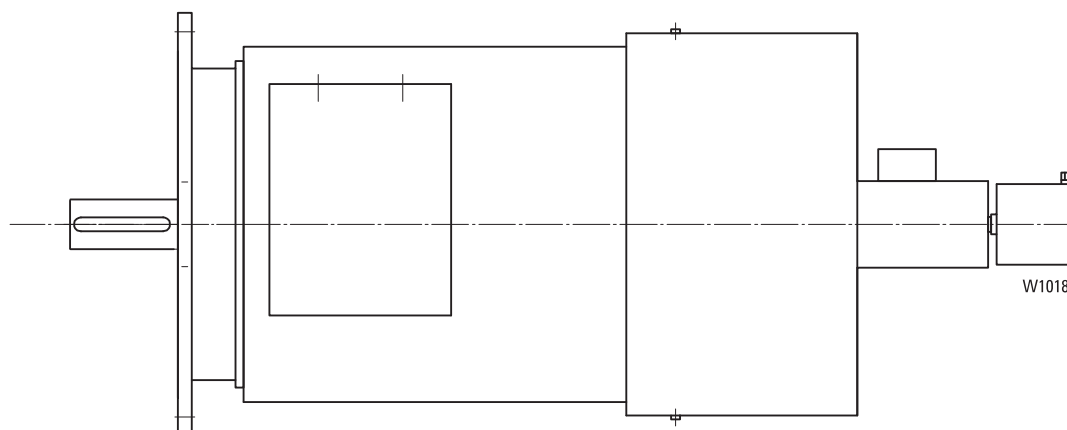
Pos	Teil-Nummer Part-Number	Stück Piece	Beschreibung Description	Benennung Designation
	29 270 83 11 9	1	SHW8	Motor
1	05 430 10 65 0	1	(Pos.2-4) Gr. 500	Bremsrotor Ersatzteilset
2	1		Bremsrotor
3	3	M10x110	Zyl.-Schraube
4	1	ISO 4762-8.8	Dichtring V-Seal
7	05 430 19 65 0	1	104 - 120 V 2)	Bremse Ersatzteilset
	05 430 18 65 0	1	156 - 180 V 2)	
8	1	(Pos.1, 8) 380 - 460 V 50Hz 3)	Bremse
10	576 008 0	1	575 - 720 V 50Hz 3)	Fremdbelüftung
13	05 430 26 65 0	1	Pos.(14-16)	Motordeckel Ersatzteilset
14	1		Motordeckel
15	1		Nabe
16	1	B18x11x60	Passfeder
18	567 239 0	4	DIN 6885	Skt.-Schraube
19	567 240 0	4	M8/D10x8	Tülle
20	507 157 0	4	A10x14x2,5	Scheibe
24	05 430 16 65 0	1	10	Lager und Dichtungen
25	1	(Pos.4, 25-28)	Wellendichtring
26	1	A60x80x8	Rillenkugellager
27	1	DIN 3760	Wellendichtring
28	1	6213-ZJC3	Rillenkugellager
	4	DIN 625	Zyl.-Schraube
30	500 039 0	4	M6x60	Skt.-Schraube
31	567 242 0	4	M12x75	Federring
32	567 263 0	4	12	Mutter
33	500 040 0	4	M12	Zyl.-Schraube
34	567 242 0	4	ISO 272	Federring
35	567 263 0	4	M12x90	Mutter
42	579 249 0	1	12	Drehimpulsgeber
			ISO 272	

1) Bitte Betriebsspannung und Frequenz angeben.
2) Spulenspannung
3) Betriebsspannung Motor

1) Please state operating voltage and frequency.
2) Coil voltage
3) Operating voltage motor



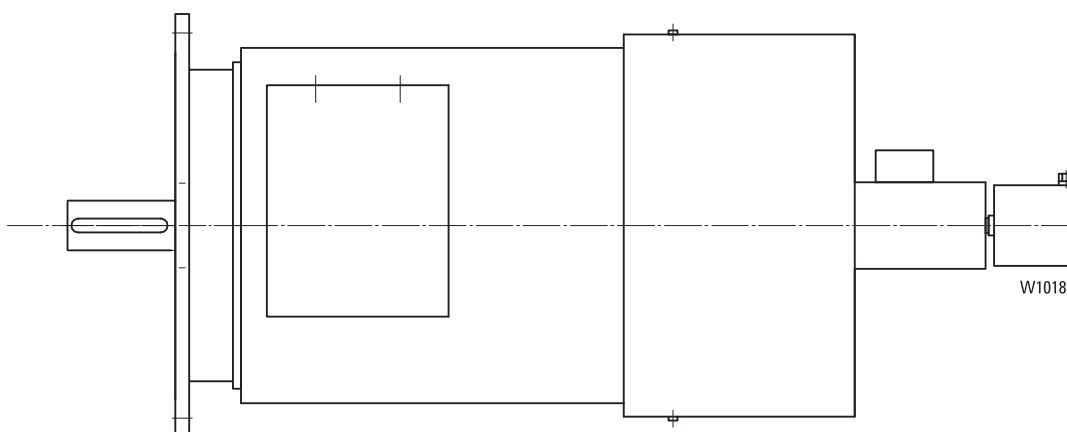
4H103



Bitte immer die Fabrik-Nr. des Hebezeuges angeben.

Please always state hoist serial number.

4H113



Bitte immer die Fabrik-Nr. des Hebezeuges angeben.

Please always state hoist serial number.

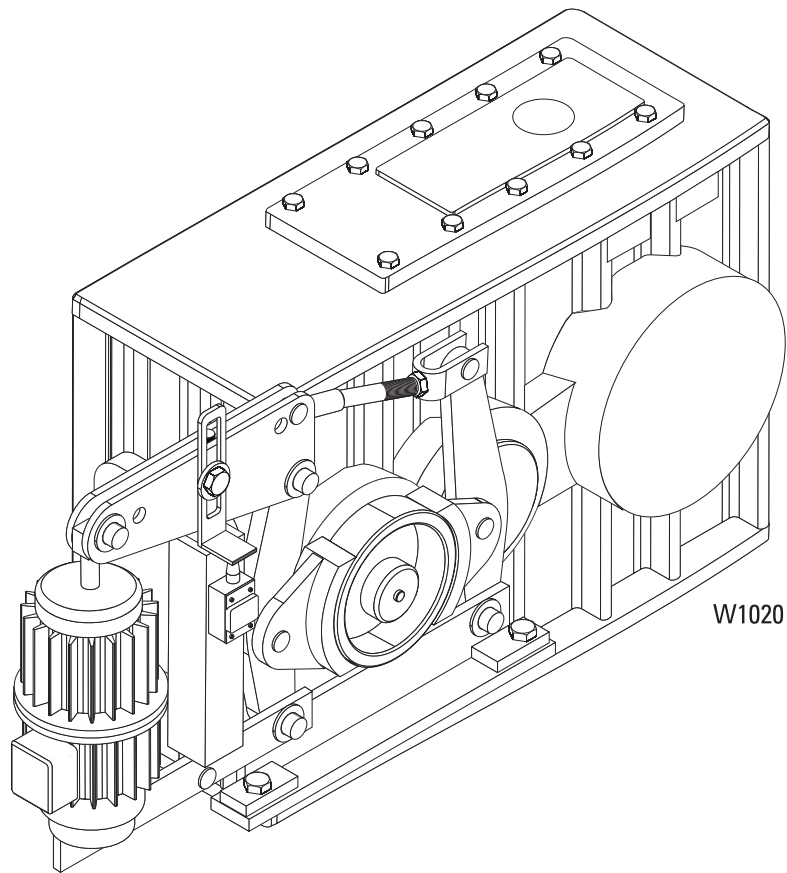


Originalteile
Original parts
SHW 8

STAHL
CraneSystems 

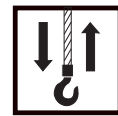
Getriebe / gear

KP.25
KP.28
KP.31

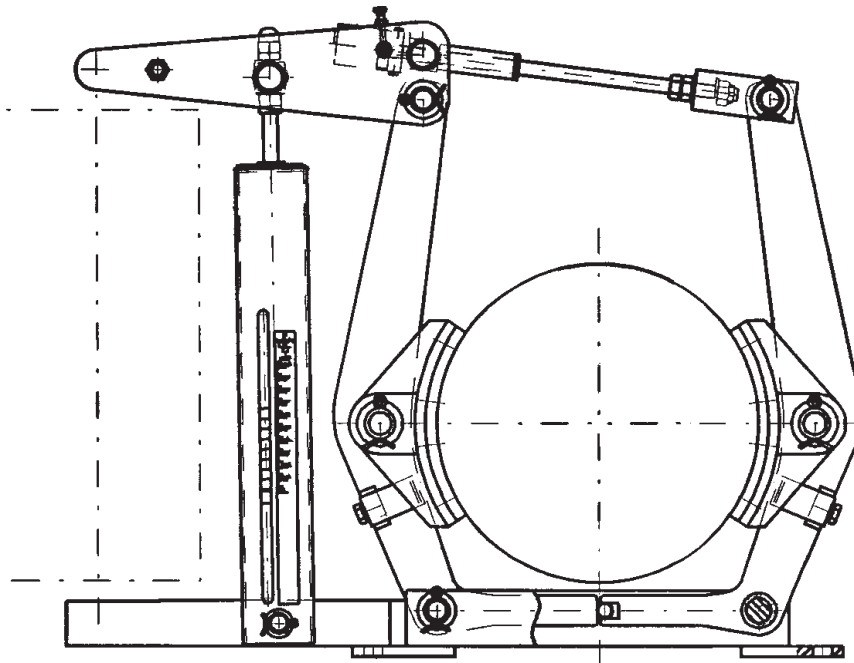


Bitte immer die Fabrik-Nr. des Hebezeuges angeben.

Please always state hoist serial number.



Bremse / brake

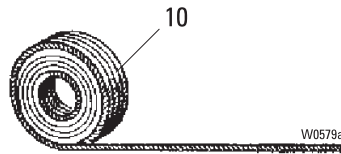
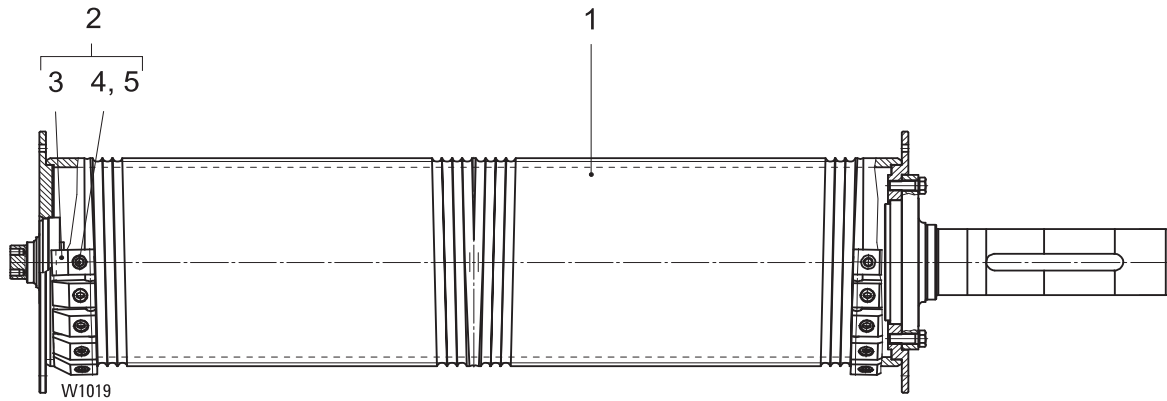


Bitte immer die Fabrik-Nr. des Hebezeuges angeben.

Please always state hoist serial number.



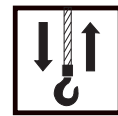
Seiltrommel / rope drum



Pos	Teil-Nummer Part-Number	Stück Piece	Beschreibung Description	Benennung	Designation
1	08 430 29 40 0	1	D22 mm L2 8/2 KP.25 (Pos.2)	Seiltrommel	Rope drum
	08 430 30 40 0	1	D22 mm L3 8/2 KP.25 (Pos.2)		
	08 430 31 40 0	1	D22 mm L4 8/2 KP.25 (Pos.2)		
	08 430 17 40 0	1	D22 mm L2 8/2 KP.28 (Pos.2)		
	08 430 18 40 0	1	D22 mm L3 8/2 KP.28 (Pos.2)		
	08 430 19 40 0	1	D22 mm L4 8/2 KP.28 (Pos.2)		
	08 430 00 40 0	1	D22 mm L2 8/2 KP.31 (Pos.2)		
	08 430 02 40 0	1	D22 mm L3 8/2 KP.31 (Pos.2)		
	08 430 03 40 0	1	D22 mm L4 8/2 KP.31 (Pos.2)		
	08 430 20 40 0	1	D20 mm L2 12/2 KP.31 (Pos.2)		
	08 430 21 40 0	1	D20 mm L3 12/2 KP.31 (Pos.2)		
	08 430 22 40 0	1	D20 mm L4 12/2 KP.31 (Pos.2)		
2	08 430 00 46 0	10	D22 mm (Pos.3-5)	Klemmplatte komplett	Clamping plate complete
3	1		Klemmplatte	Clamping plate
4	1	M20x40	Zyl.-Schraube	Socket head cap screw
5	1	S20	Sicherungsscheibe	Locking disc
2	46 330 00 46 0	10	D20 mm (Pos.3-5)	Klemmplatte komplett	Clamping plate complete
3	1		Klemmplatte	Clamping plate
4	1	M16x35	Zyl.-Schraube	Socket head cap screw
5	1	S16	Sicherungsscheibe	Locking disc
10		1)	Drahtseil	Wire rope

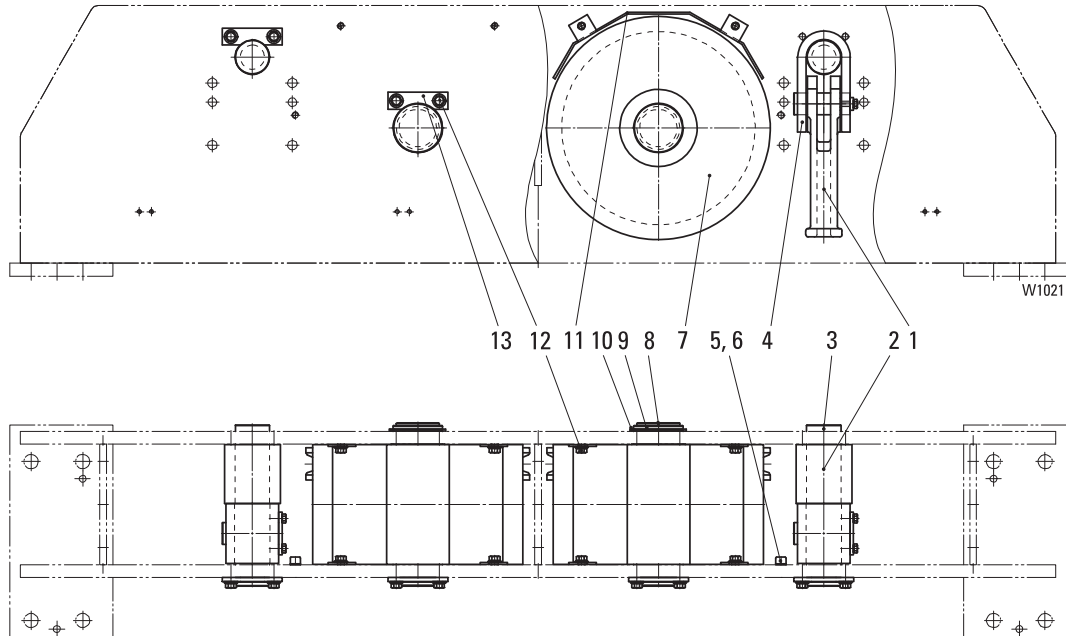
1) Siehe Datenblatt

1) See data sheet



Seilauflhängung / rope suspension

8/2 -1 (80t)

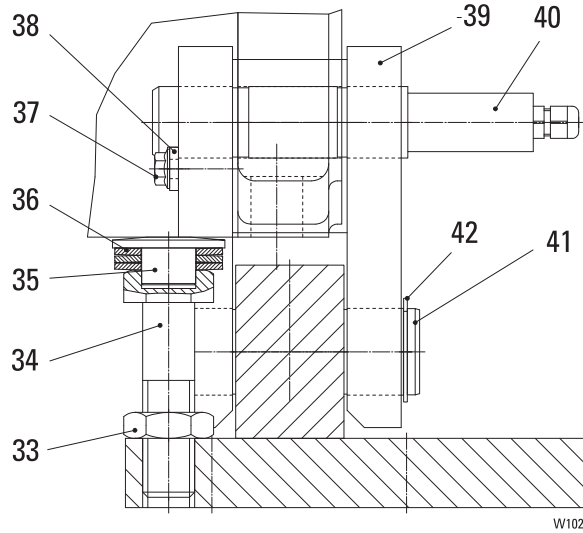


Pos	Teil-Nummer Part-Number	Stück Piece	Beschreibung Description	Benennung	Designation
1	08 430 01 48 0	2	D22 mm	Keilendklemme	Clamp
2	08 432 00 51 0	2	130/80,5/137	Buchse	Bushing
3	08 432 00 14 0	2		Achse	Axle
4	47 332 00 07 0	2		Aufhängertraverse	Suspension traverse
5	500 239 0	2	M16x30	Zyl.-Schraube	Socketed head cap screw
6	507 001 0	2	S16	Sicherungsscheibe	Locking disc
7	01 430 07 53 0	2	D450 mm	Seilrolle	Rope pulley
8	08 432 00 16 0	2		Seilrollenbolzen	Bolt
9	08 432 00 50 0	2		Bundbuchse	Bushing
10	506 257 0	2	115x4	Sicherungsring	Circlip
11	08 432 00 13 0	2		Schutzblech	Protective cover
12	501 123 0	16	M16x30	Sicherungsschraube	Safety bolt
13	11 714 00 98 0	4		Achshalter	Axle keep plate
	517 801 0	2		Drahtseilklemme	Wire rope clamp



Überlastabschaltung /over load cutt-off device

8/2 -1 (80t)

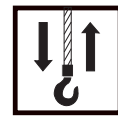


W1024

Pos	Teil-Nummer Part-Number	Stück Piece	Beschreibung Description	Benennung Designation
33	506 260 0	1	M24	ISO 4035
34	08 432 02 90 0	1	KP. 25/28	Skt.-Mutter Hexagonal nut
	08 432 01 90 0	1	KP. 31	Schraube spez. Screw spec.
35	08 432 03 88 0	1		Druckstück Thrust piece
36	562 933 0	3	50x25,4x4,1	Tellerfeder Cup spring
37	501 133 0	2	M8x16	Sicherungsschraube Safety bolt
38	33 242 00 98 0	1		Achshalter Axle keep plate
	506 246 0	2	32x1,5	Sicherungsring Circlip
39	08 430 00 25 0	1		Sicherungsring Circlip
	08 430 01 25 0	1		Verbindungsflasche kompl. Connection piece
	08 430 02 25 0	1		
40	571 044 0	1	LET8-6600	Sensor
	571 068 0	1	LET8-3600	Sensor
	571 069 0	1	LET8-4000	Sensor
41	08 432 02 92 0	1		Bolzen Bolt
	08 432 03 92 0	1		Bolzen Bolt
	08 432 01 92 0	1		
42	506 246 0	2	32x1,5	Sicherungsring Circlip
	506 247 0	2	40x1,75	

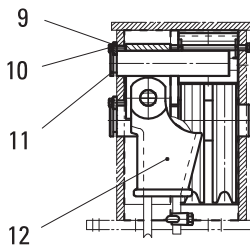
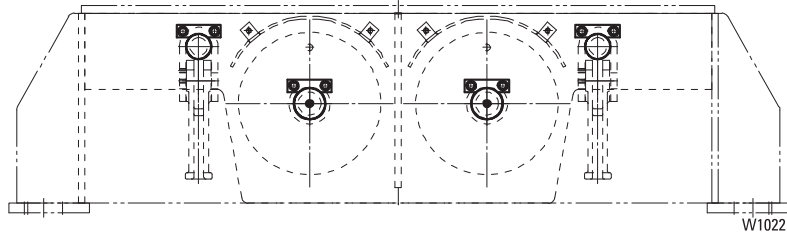
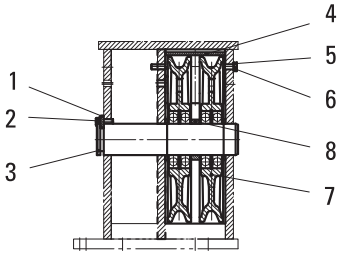
*1 Mit Überlastabschaltung
*2 Ohne Überlastabschaltung

*1 With overload cutt-off device
*1 Without overload cutt-off device



Seilauflhängung / rope suspension

12/2-1 (100t)

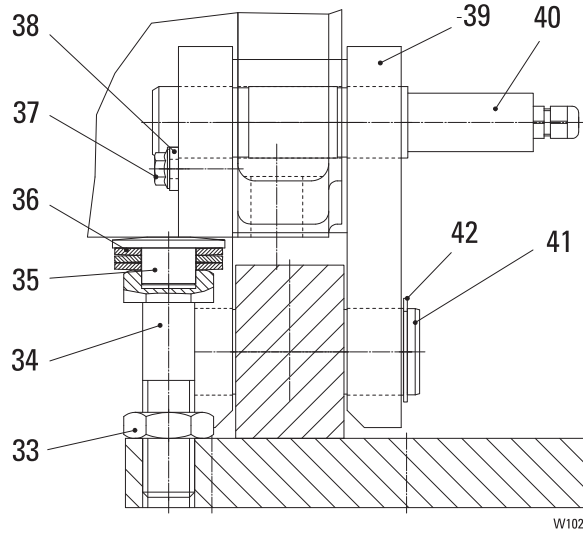


Pos	Teil-Nummer Part-Number	Stück Piece	Beschreibung Description	Benennung	Designation
1	11 714 00 98 0	2		Achshalter	Axle keep plate
2	501 033 0	4	M16x40	Sicherungsschraube	Safety bolt
3	08 432 01 14 0	2		Achse	Axle
4	08 432 01 13 0	2		Schutzblech	Protective cover
5	507 001 0	4	S16	Sicherungsscheibe	Locking disc
6	501 090 0	4	M16x240	Skt.-Schraube	Hexagon head cap screw
7	01 430 07 53 0	4	D450 mm	Seilrolle	Rope pulley
8	08 432 01 51 0	2	127/100,5/28	Buchse	Bushing
9	11 714 00 98 0	2		Achshalter	Axle keep plate
10	501 033 0	4	M16x40	Sicherungsschraube	Safety bolt
11	08 432 00 14 0	2		Achse	Axle
12	08 430 00 28 0	2	100t	Seilauflhängung kompl.	Rope suspension compl.



Überlastabschaltung /over load cutt-off device

12/2 -1 (100t)

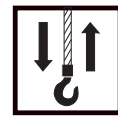


W1024

Pos	Teil-Nummer Part-Number	Stück Piece	Beschreibung Description	Benennung Designation	Designation
33	506 260 0	1	M24 ISO 4035	Skt.-Mutter	Hexagonal nut
34	08 432 01 90 0	1	KP. 31	Schraube spez.	Screw spec.
35	08 432 03 88 0	1		Druckstück	Thrust piece
36	562 933 0	3	50x25,4x4,1	Tellerfeder	Cup spring
37	501 133 0	2	M8x16	Sicherungsschraube	Safety bolt
38	33 242 00 98 0	1		Achshalter	Axle keep plate
	506 246 0	2	32x1,5	Sicherungsring	Circlip
				Verbindungsglasche kompl.	Connection piece
39	08 430 02 25 0	1	KP. 31		
40	571 044 0	1	LET8-6600	Sensor	Sensor
	571 068 0	1	LET8-3600		
	571 069 0	1	LET8-4000		
	08 432 02 92 0	1		*2 Bolzen	Bolt
41	08 432 01 92 0	1	KP. 28/31	Bolzen	Bolt
42	506 247 0	2	40x1,75	KP. 28/31 Sicherungsring	Bolt Circlip

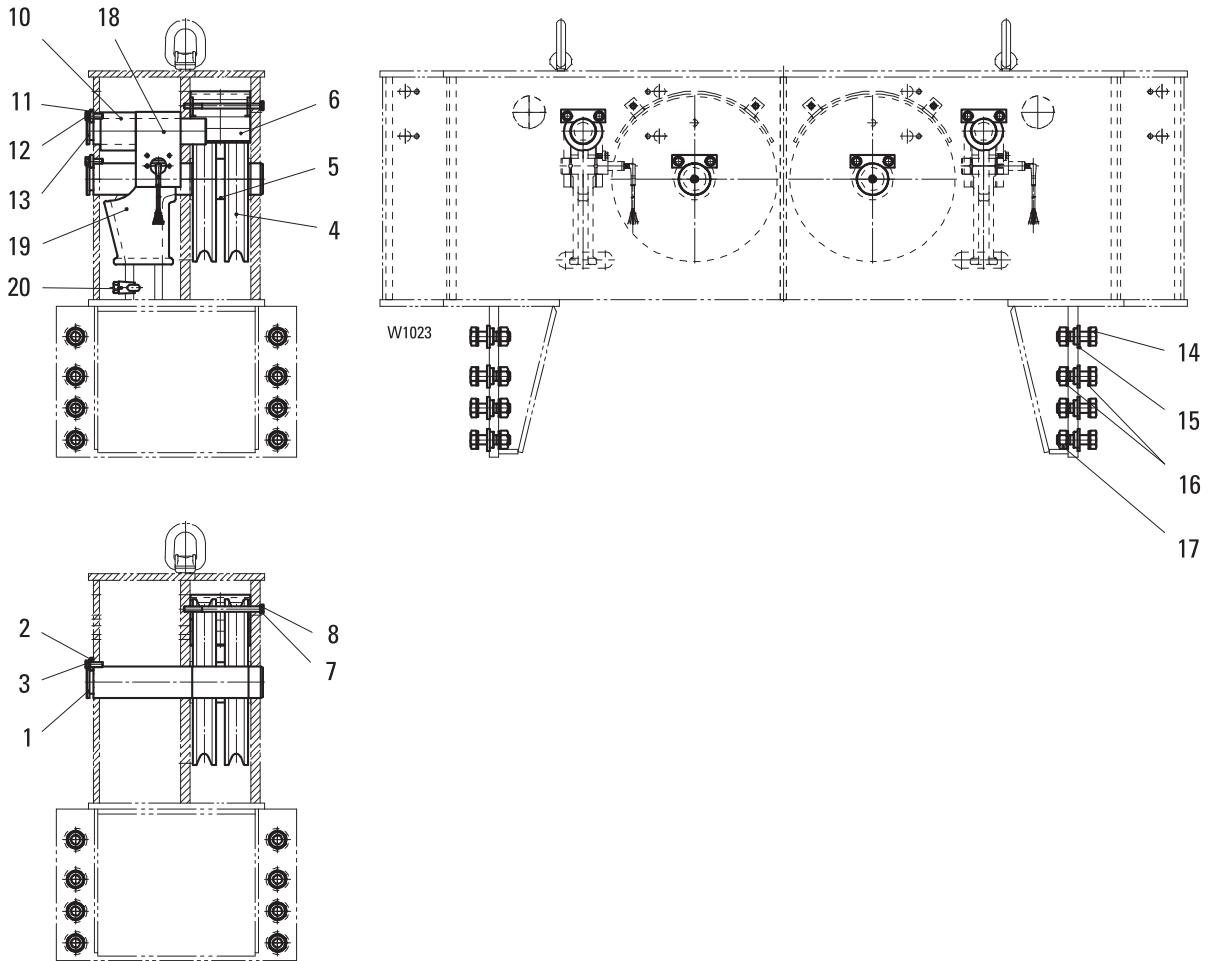
*1 Mit Überlastabschaltung
*2 Ohne Überlastabschaltung

*1 With overload cutt-off device
*1 Without overload cutt-off device



Seilauflangung / rope suspension

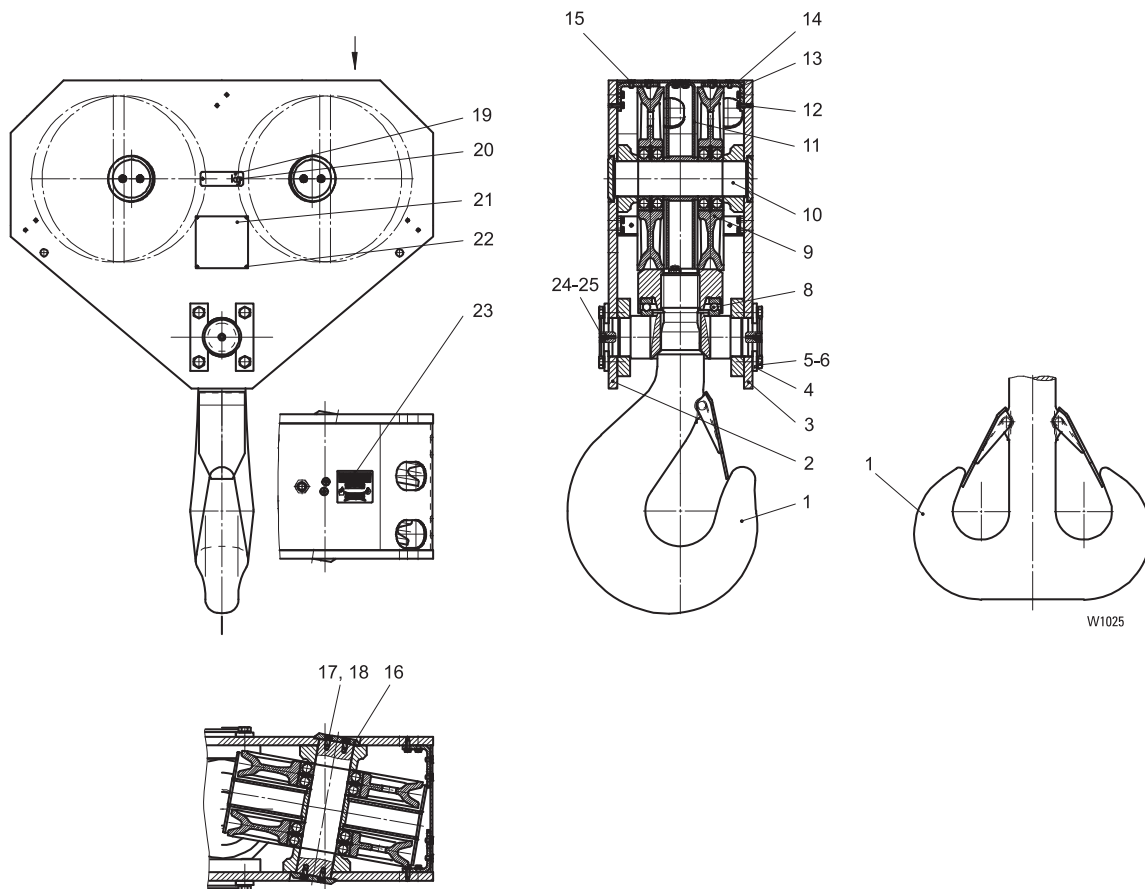
12/2-1 (125/160t)



Pos	Teil-Nummer Part-Number	Stück Piece	Beschreibung Description	Benennung Designation
1	08 432 02 14 0	2		Achse Axle
2	11 714 00 98 0	2		Achshalter Axle keep plate
3	501 033 0	4	M16x40	Sicherungsschraube Safety bolt
4	01 430 07 53 0	4	D450 mm	Seilrolle Rope pulley
	03 330 70 53 0	4	D450 mm	
5	08 432 01 51 0	2	127/100,5/28	Buchse Bushing
6	08 432 01 13 0	2		Schutzblech Protective cover
7	501 090 0	4	M16x240	Skt.-Schraube Hexagon head cap screw
8	507 001 0	4	S16	Sicherungsscheibe Locking disc
10	08 432 02 51 0	2	120/80,5/112	Buchse Bushing
11	11 714 00 98 0	2		Achshalter Axle keep plate
12	501 033 0	4	M16x40	Sicherungsschraube Safety bolt
13	08 432 00 14 0	2		Achse Axle
14	502 978 0	16	M30x105	Skt.-Schraube Hexagon head cap screw
15	30 712 01 50 0	16		Buchse Bushing
16	507 080 0	32		Scheibe Disc
17	501 073 0	16	M30	Skt.-Mutter Hexagonal nut
18	47 332 00 07 0	2		Aufhängertraverse Suspension traverse
19	08 430 05 48 0	2	D20 mm	Keilendklemme Clamp
	08 430 02 48 0	2	D20 mm	
	08 430 06 48 0	2	D22 mm	
	08 430 03 48 0	2	D22 mm	
	08 430 07 48 0	2	D25 mm	
	08 430 04 48 0	2	D25 mm	
20	517 801 0	2	D20 mm	Drahtseilklemme Wire rope clamp
	517 931 0	2	D24/26 mm	



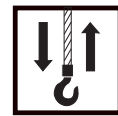
U450-8



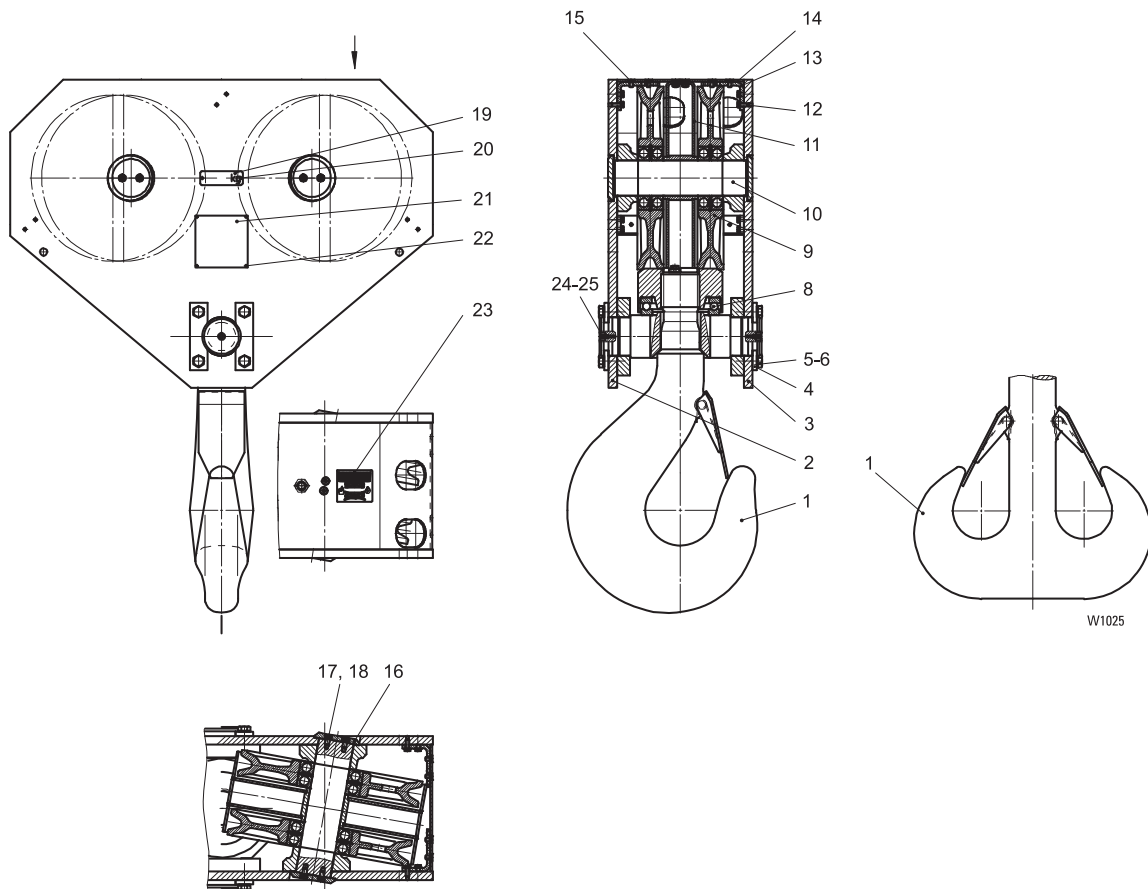
Pos	Teil-Nummer Part-Number	Stück Piece	Beschreibung Description	Benennung Designation
	01 430 65 53 0	1	U450-8 1)2) (Pos.1-25)	Hakenflasche Bottom hook block
	01 430 66 53 0	1	U450-8 1)3) (Pos.1-25)	
1	01 430 07 52 0	1	RSN 32	Lasthaken kompl. Load hook compl.
	01 430 08 52 0	1	RSN 32	Doppelhaken kompl. Ramshorn hook compl.
2	01 430 02 54 0	1		Traglasche Side cheek
3	01 430 03 54 0	1		Traglasche Side cheek
4	01 435 00 98 0	4		Achshalter Axle keep plate
5	500 958 0	8	M20x40 EN 24017-8.8	Skt.-Schraube Hexagonal head cap screw
6	507 005 0	8	S20	Sicherungsscheibe Locking disc
8	560 018 0	1	51232	Axial-Rillenkugellager Axial bearing
9	01 430 07 53 0	4	D450 mm	Seilrolle kompl. Rope pulley
10	01 435 14 14 0	2	U45.-8	Achse Axle
11	01 430 00 55 0	2		Schutzblech kompl. Protective cover compl.
12	501 115 0	12	M10x25	Sicherungsschraube Safety bolt
13	05 437 10 83 0	6		Befestigungswinkel Clip angle
14	01 435 00 15 0	1		Schutzblech Protective cover
15	501 018 0	16	M10x20 ISO 10462	Skt.-Schraube Hexagon head screw
16	03 335 13 31 0	4		Haltescheibe Retaining disc
17	500 972 0	8	M12x20 DIN 6912-8.8	Zyl.-Schraube Socket head cap screw
18	506 841 0	8	S12	Sicherungsscheibe Locking disc
19	50 335 51 45 0	2	50000 kg	Traglastschild S.W.L- sign
	50 335 55 45 0	2	63000 kg	
	50 335 56 45 0	2	80000 kg	
20	507 831 0	4	3x5	Blindniet Blind rivet
21	42 339 00 42 0	2		Firmenschild Name plate
22	507 831 0	8	3x5	Blindniet Blind rivet
23	01 435 10 42 0	1	AM8x1,25	Hinweisschild Information sign
24	519 005 0	2		Kegelschmiernippel Greas nipple
25	05 331 00 97 0	2		Abdeckkappe Protective cap

1) Bitte Traglast angeben.
2) Mit Einfach Haken RSN
3) Mit Doppelhaken RS

1)Please state capacity.
2) With load hook RSN
3) With ramshorn hook RS



U451-8



Pos	Teil-Nummer Part-Number	Stück Piece	Beschreibung Description	Benennung Designation
	01 430 67 53 0	1	U451-8 1)2) (Pos.1-25)	Hakenflasche Bottom hook block
	01 430 68 53 0	1	U451-8 1)3) (Pos.1-25)	
1	01 430 09 52 0	1	RSN 40	Lasthaken kompl. Load hook compl.
	01 430 10 52 0	1	RSN 40	Doppelhaken kompl. Ramshorn hook compl.
2	01 430 02 54 0	1		Traglasche Side cheek
3	01 430 03 54 0	1		Traglasche Side cheek
4	01 435 00 98 0	4		Achshalter Axle keep plate
5	500 958 0	8	M20x40 EN 24017-8.8	Skt.-Schraube Hexagonal head cap screw
6	507 005 0	8	S20	Sicherungsscheibe Locking disc
8	560 174 0	1	51236	Axial-Rillenkugellager Axial bearing
9	01 430 07 53 0	4	D450 mm	Seilrolle kompl. Rope pulley
10	01 435 14 14 0	2	U45.-8	Achse Axle
11	01 430 00 55 0	2		Schutzblech kompl. Protective cover compl.
12	501 115 0	12	M10x25	Sicherungsschraube Safety bolt
13	05 437 10 83 0	6		Befestigungswinkel Clip angle
14	01 435 00 15 0	1		Schutzblech Protective cover
15	501 018 0	16	M10x20 ISO 10462	Skt.-Schraube Hexagon head screw
16	03 335 13 31 0	4		Haltescheibe Retaining disc
17	500 972 0	8	M12x20 DIN 6912-8.8	Zyl.-Schraube Socket head cap screw
18	506 841 0	8	S12	Sicherungsscheibe Locking disc
19	50 335 51 45 0	2	50000 kg	Traglastschild S.W.L.- sign
	50 335 55 45 0	2	63000 kg	
	50 335 56 45 0	2	80000 kg	
20	507 831 0	4	3x5	Blindniet Blind rivet
21	42 339 00 42 0	2		Firmenschild Name plate
22	507 831 0	8	3x5	Blindniet Blind rivet
23	01 435 10 42 0	1	AM8x1,25	Hinweisschild Information sign
24	519 005 0	2		Kegelschmiernippel Greas nipple
25	05 331 00 97 0	2		Abdeckkappe Protective cap

1) Bitte Traglast angeben.
2) Mit Einfach Haken RSN
3) Mit Doppelhaken RS

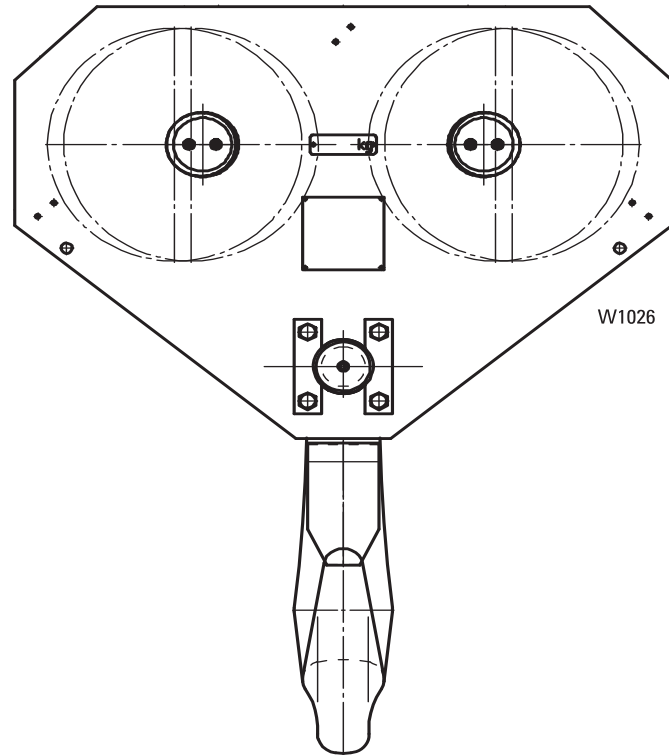
1) Please state capacity.
2) With load hook RSN
3) With ramshorn hook RS



Originalteile
Original parts
SHW 8

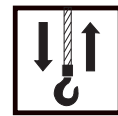
STAHL
CraneSystems 

U45.-12

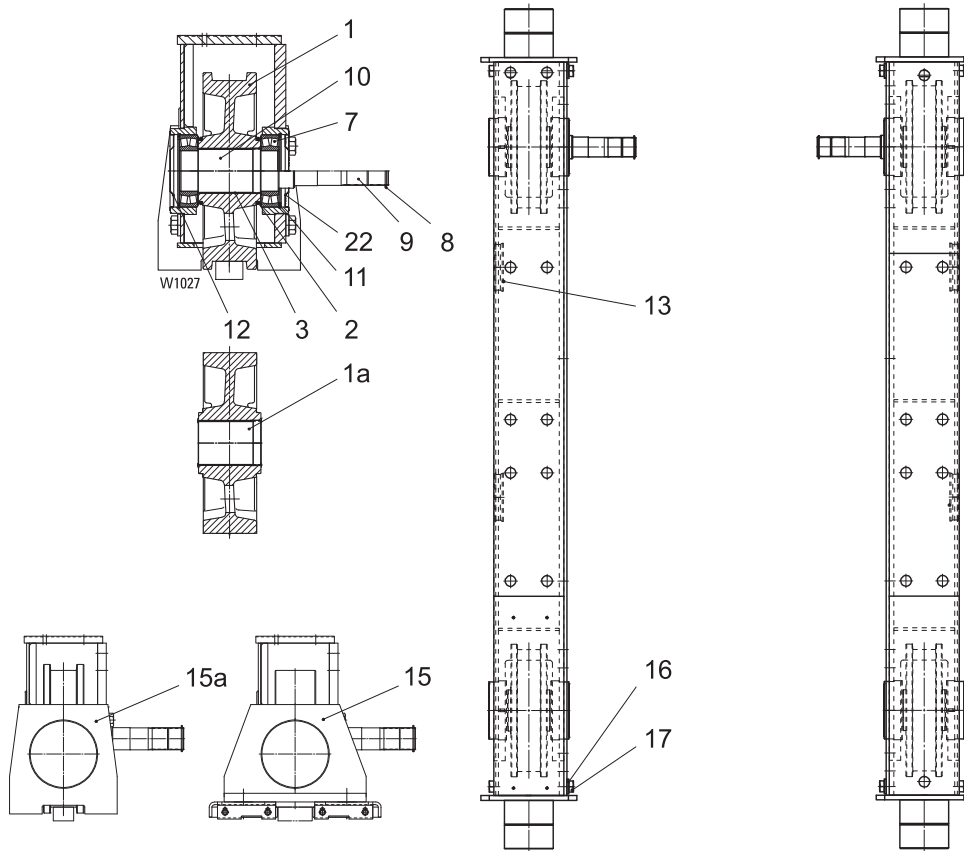


Bitte immer die Fabrik-Nr. des Hebezeuges angeben.

Please always state hoist serial number.



OE-S 10
(80/100t)



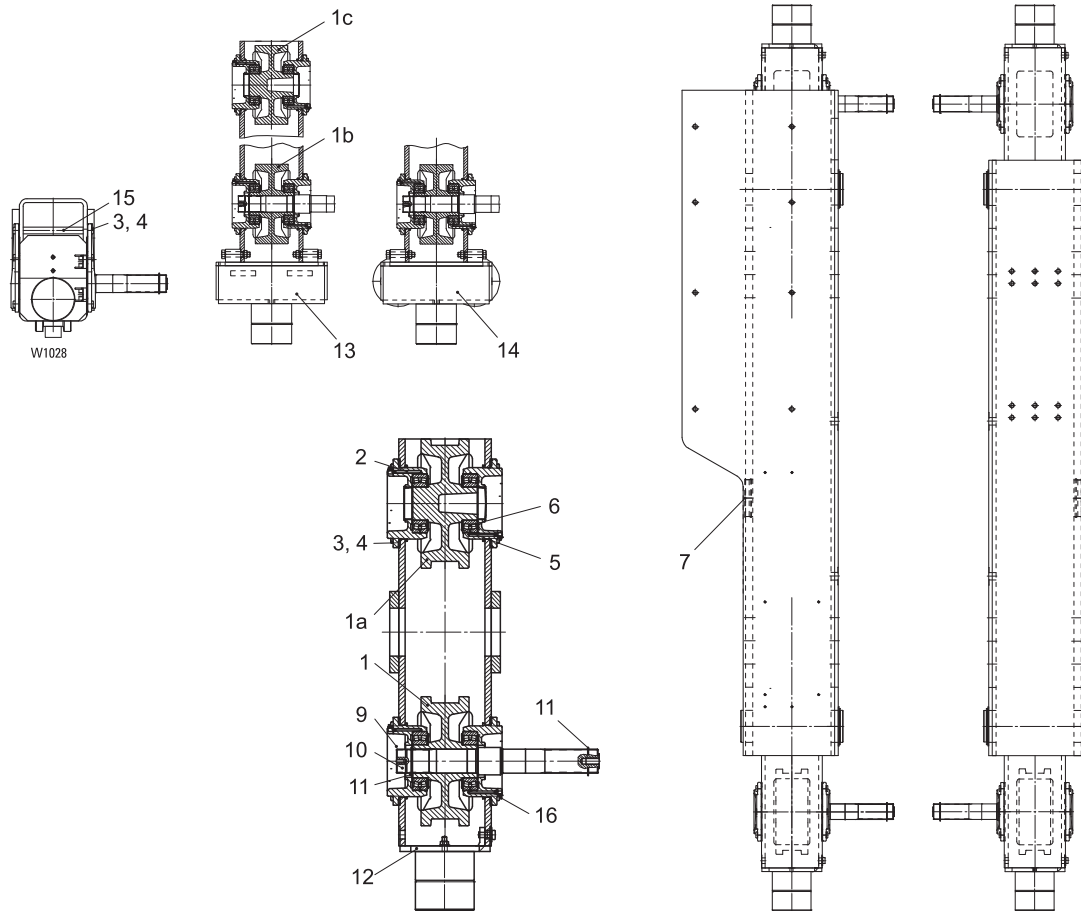
Pos	Teil-Nummer Part-Number	Stück Piece	Beschreibung Description	Benennung Designation	Designation
1	24 254 62 01 0	2	D 400 mm *) 50 mm	Lauftrad	Travelling wheel
	24 254 63 01 0	2	D 400 mm *) 60 mm		
	24 254 64 01 0	2	D 400 mm *) 70 mm		
1a	24 254 60 01 0	2	D 400 mm	Lauftrad	Travelling wheel
2	518 303 0	4		Dichtring	Sealing ring
3	561 001 0	4		Buchse	Bushing
7	560 808 0	4	222 18	Pendelrollenlager	Roller bearing
8	506 916 0	2	65x2,5	Sicherungsring	Circlip
9	24 254 60 14 0	1		Lauftradwelle	Travelling wheel shaft
10	24 254 60 17 0	1		Lauftradachse	Axle
11	506 922 0	4	160x4	Sicherungsring	Circlip
12	29 712 00 58 0	3		Verschlusdeckel	End cap
13	27 712 04 58 0	2		Deckel	Cap
15	30 710 00 31 0	2	*) 50 mm	Führungsrollenträger	Guide roller support
	30 710 01 31 0	2	*) 60 mm		
	30 710 02 31 0	2	*) 70 mm		
	30 710 03 31 0	2	*) 100 mm		
	30 710 04 31 0	2	*) 130 mm		
15a	30 710 79 31 0	2	*) ≤60 mm	Entgleisungsschutz	Anti derail device
	30 710 80 31 0	2	*) > 60 mm ≤ 100 mm		
	30 710 81 31 0	2	*) > 100 mm		
16	506 226 0	8	NL24SP	Sicherungsscheibe	Locking disc
17	500 919 0	8	M24x60	Skt.-Schraube	Hexagonal head screw
22	29 712 01 58 0	1		Verschlusdeckel	End cap

*) Schienenbreite

*) Rail width



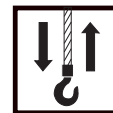
OE-S 99
(125/160t)



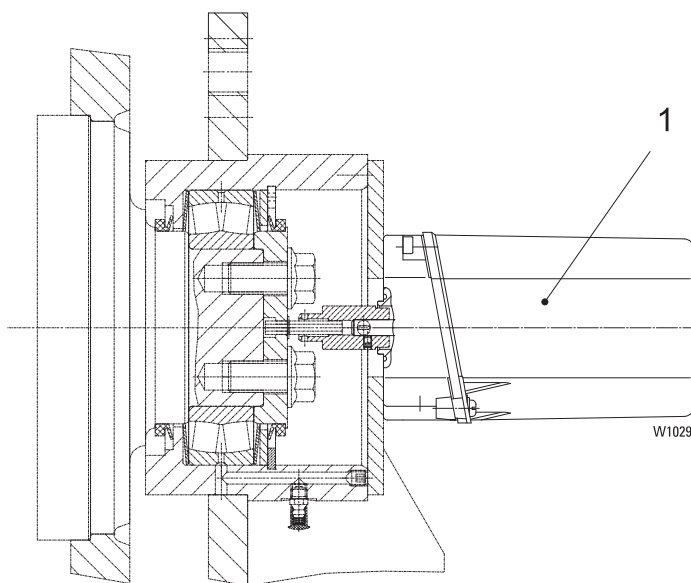
Pos	Teil-Nummer Part-Number	Stück Piece	Beschreibung Description	Benennung	Designation
1	09 257 15 01 0	2	D 315 mm A *) 50 mm	Laufrad	Travelling wheel
	09 257 16 01 0	2	D 315 mm A *) 60 mm		
	09 257 17 01 0	2	D 315 mm A *) 70 mm		
	09 257 18 01 0	2	D 315 mm A *) 80 mm		
1a	09 257 15 05 0	2	D 315 mm B *) 50 mm	Laufrad	Travelling wheel
	09 257 16 05 0	2	D 315 mm B *) 60 mm		
	09 257 17 05 0	2	D 315 mm B *) 70 mm		
	09 257 18 05 0	2	D 315 mm B *) 80 mm		
1b	09 257 19 01 0	2	D 315 mm A	Laufrad	Travelling wheel
1c	09 257 19 05 0	2	D 315 mm B	Laufrad	Travelling wheel
2	39 712 03 58 0	4		Lagerflansch	Flange bearing
3	507 001 0	28	S16	Sicherungsscheibe	Locking disc
4	500 812 0	28	M16x35	Zyl.-Schraube	Socket head cap screw
5	561 148 0	4	22218 AV	Nilosring	Nilos ring
6	560 808 0	4	222 18	Pendelrollenlager	Self aligning roller bearing
7	27 712 04 58 0	1		Deckel	Cover
9	515 107 0	3	GPN350/60	Kapsto Verschlussstopfen	Conical plug
10	09 257 02 14 0	1		Laufradwelle	Travelling wheel shaft
11	506 916 0	2	65x2,5	Sicherungsring	Circlip
12	39 710 00 23 0	1		Puffer komplett	Buffer complete
13	39 710 18 31 0	1	*) 55-70 mm	Entgleisungsschutz	Anti derail device
			*) 80-100 mm		
			*) 50 mm		
			*) 60 mm		
			*) 70 mm		
14	39 710 40 31 0	1	*) 50 mm	Führungsrollenträger	Guide roller support
			*) 60 mm		
			*) 70 mm		
			*) 80 mm		
			*) 100 mm		
15	39 712 02 92 0	2		Bolzen	Bolt
16	519 475 0	4	CM8x1	Kegelschmiernippel	Conical grease nipple

*) Schienenbreite

*) Rail width



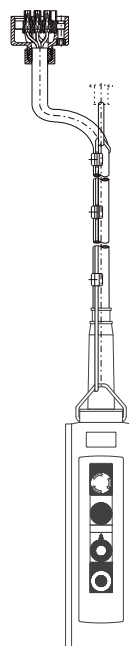
Getriebeendschalter/Gear limit switch GE-S



Pos	Teil-Nummer Part-Number	Stück Piece	Beschreibung Description	Benennung	Designation
1	580 000 0	1	GE-S 075.02	Getriebeendschalter	Gear hoist limit switch
	580 001 0	1	GE-S 075.04		
	580 002 0	1	GE-S 075.06		
	580 003 0	1	GE-S 075.08		
	580 004 0	1	GE-S 125.02		
	580 005 0	1	GE-S 125.04		
	580 006 0	1	GE-S 125.06		
	580 007 0	1	GE-S 125.08		
	580 008 0	1	GE-S 205.02		
	580 009 0	1	GE-S 205.04		
	580 010 0	1	GE-S 205.06		

Standardsteuergerät / standard control switch

Typ Type	Teil-Nummer Part-Number
STH 1102-009	17 390 83 21 9
STH 1102-010	17 390 79 21 9
STH 1106-010	
STH 1106-009	17 390 82 21 9
STH 1202-021	17 390 71 21 9
STH 1202-027	17 390 76 21 9
STH 1206-021	17 390 70 21 9
STH 1206-027	



Bei Bestellung bitte Steuerkabellänge angeben.

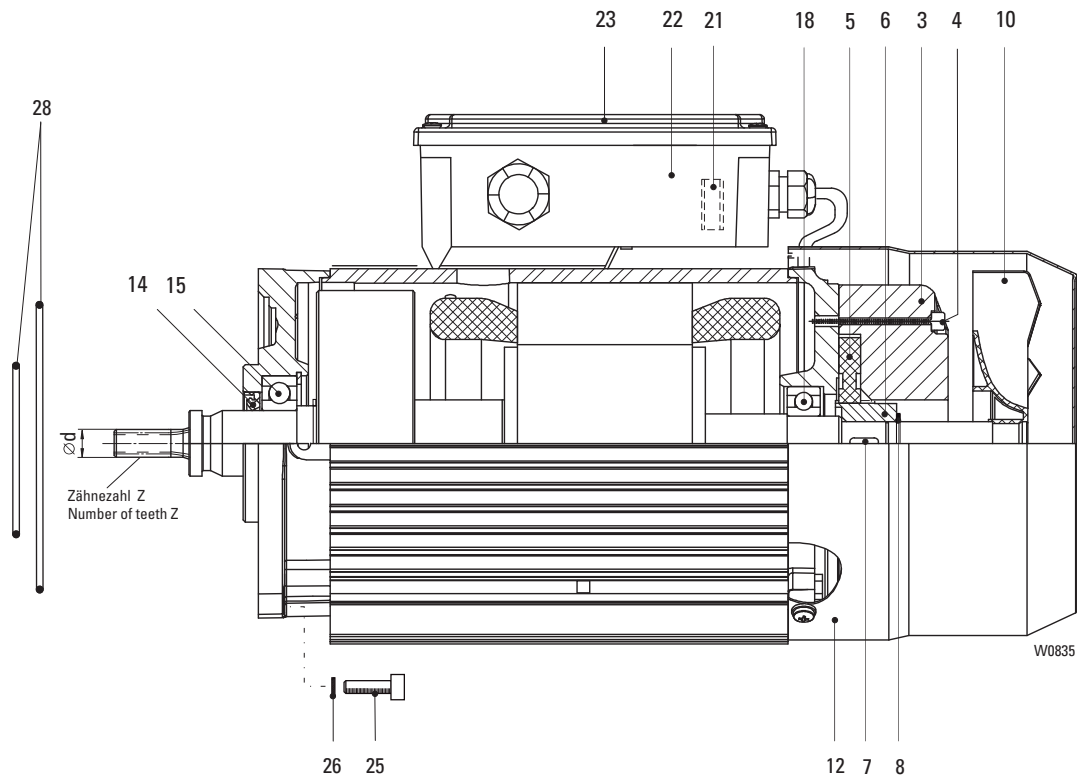
Please state length of control cable when ordering.

Sondersteuergeräte: Bitte Typ angeben.

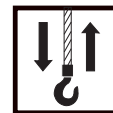
Special control switches: Please state type



8/2F12
SA-C ... 123



Pos	Teil-Nummer Part-Number	Stück Piece	Beschreibung Description	Benennung Designation
	21 270 87 11 9	1	SF 17 113 123 1) (Pos.1-23)	Z 6 d 9,60 Motor kompl. Motor compl.
		1	SF 14 113 123 1) (Pos.1-23)	
	21 270 86 11 9	1	SF 17 111 123 1) (Pos.1-23)	Z 7 d 10,75
		1	SF 17 219 123 1) (Pos.1-23)	
		1	SF 15 226 123 1) (Pos.1-23)	
		1	SF 14 111 123 1) (Pos.1-23)	
		1	SF 25 230 123 1) (Pos.1-23)	
		1	SF 11 226 123 1) (Pos.1-23)	
	21 270 85 11 9	1	SF 17 109 123 1) (Pos.1-23)	
		1	SF 17 217 123 1) (Pos.1-23)	
		1	SF 15 224 123 1) (Pos.1-23)	
		1	SF 14 109 123 1) (Pos.1-23)	
		1	SF 25 226 123 1) (Pos.1-23)	
		1	SF 25 228 123 1) (Pos.1-23)	
		1	SF 11 217 123 1) (Pos.1-23)	
		1	SF 11 224 123 1) (Pos.1-23)	
		1	SA-C 57 38 123 1) (Pos.1-23)	
		1	SA-C 57 42 123 1) (Pos.1-23)	
		1	SA-C 57 40 123 1) (Pos.1-23)	
		1	SA-C 67 42 123 1) (Pos.1-23)	
		1	SA-C 67 44 123 1) (Pos.1-23)	
		1	SA-C 67 46 123 1) (Pos.1-23)	
	21 270 84 11 9	1	SF 17 107 123 1) (Pos.1-23)	Z 11 d 14,95
		1	SF 17 215 123 1) (Pos.1-23)	
		1	SF 15 222 123 1) (Pos.1-23)	
		1	SF 14 107 123 1) (Pos.1-23)	
		1	SF 11 215 123 1) (Pos.1-23)	
		1	SF 11 222 123 1) (Pos.1-23)	



Pos	Teil-Nummer Part-Number	Stück Piece	Beschreibung Description				Z	d	Benennung	Designation
	21 270 83 11 9	1	SF 17 213 123	1)	(Pos.1-23)	9	19,20	Motor kompl.	Motor complete	
		1	SF 15 220 123	1)	(Pos.1-23)					
		1	SF 25 222 123	1)	(Pos.1-23)					
		1	SF 25 224 123	1)	(Pos.1-23)					
		1	SF 11 213 123	1)	(Pos.1-23)					
		1	SF 11 220 123	1)	(Pos.1-23)					
	21 270 82 11 9	1	SF 17 211 123	1)	(Pos.1-23)	11	22,30			
		1	SF 15 218 123	1)	(Pos.1-23)					
		1	SA-C 57 36 123	1)	(Pos.1-23)					
		1	SA-C 67 40 123	1)	(Pos.1-23)					
	21 270 74 11 9	1	SF 17 209 123	1)	(Pos.1-17)	9	27,85			
	21 270 73 11 9	1	SF 17 207 123	1)	(Pos.1-17)	11	32,35			
3	567 102 0	1	104 - 120V	2)	190 - 460V	50Hz	3)	Bremse	Brake	
	567 103 0	1	130 - 150V	2)	480 - 525V	50Hz	3)			
	567 104 0	1	156 - 180V	2)	575 - 720V	50Hz	3)			
4	502 942 0	3	M4x45		ISO 4762			Zyl-Schraube	Socket head cap screw	
5	567 100 0	1	Gr.08					Bremsrotor	Brake rotor	
6	567 349 0	1						Nabe	Hub	
7	537 011 0	1	5x5x16		DIN 6885			Passfeder	Feather key	
8	506 093 0	1	15x1		DIN 471			Sicherungsring	Circlip	
10	576 051 0	1						Lüfterrad	Fan wheel	
12	567 344 0	1						Lüfterhaube	Fan cowling	
14	561 012 0	1	20x35x7	4)				Wellendichtring	Shaft seal	
15	560 091 0	1	6204-2RS		DIN 625			Rillenkugellager	Grooved ball bearing	
18	560 017 0	1	6202-2RS		DIN 625			Rillenkugellager	Grooved ball bearing	
21	567 108 0	1	PME400	5)				Gleichrichter	Rectifier	
	567 190 0	1	PMB400	6)						
22	570 076 0	1						Klemmenkasten	Terminal box	
23	567 347 0	1						Klemmenkastendeckel	Terminal box lid	
25	500 231 0	4	M6x20		ISO 4762-8.8			Zyl-Schraube	Socket head cap screw	
26	506 838 0	4	S6					Sicherungsscheibe	Lock washer	
28	515 020 0	1	130x2		SF 1.			Runddichtring	Round sealing ring	
	515 953 0	1	70x2		SF 25; SA-C .7					

1) Bitte Betriebsspannung, Frequenz, Getriebemotortyp und Motortyp angeben.

2) Spulenspannung

3) Betriebsspannung Motor

4) nur austauschbar bei Z 6 - 11, d < 20mm

5) Nicht für Motorspannungen 190...210V/60Hz

6) Nur für Motorspannungen 190...210V/60Hz

1) Please state operating voltage, frequency, type of geared motor and type of motor.

2) Coil voltage

3) Operating voltage motor

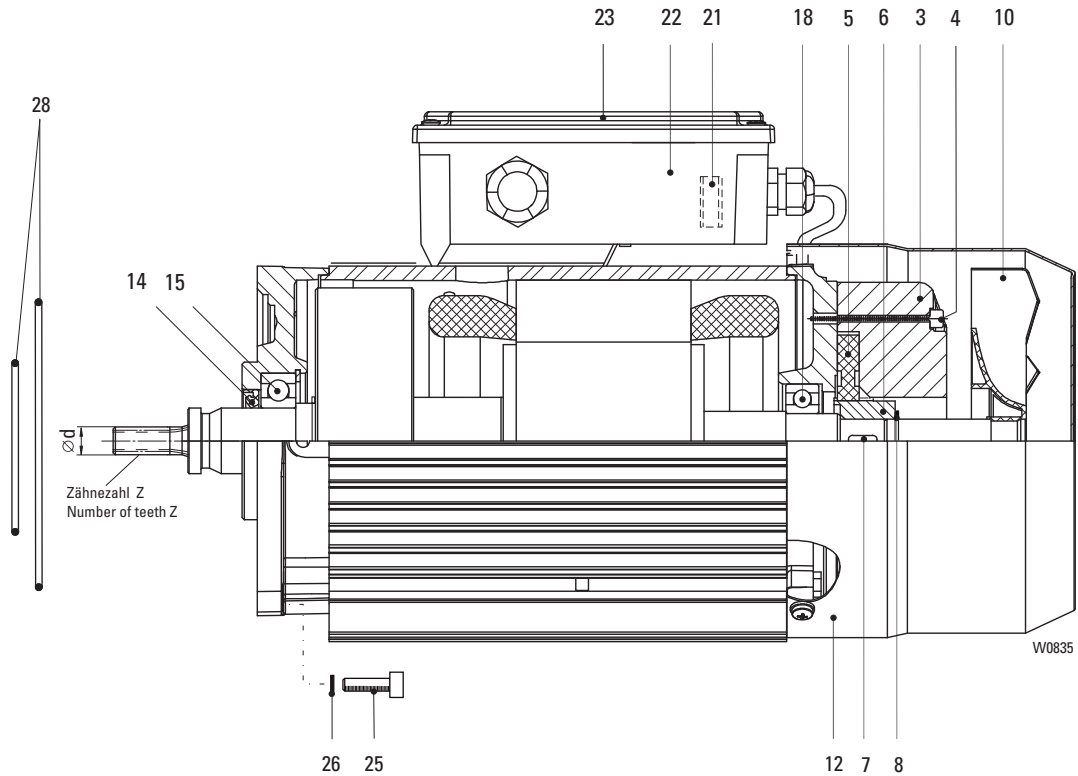
4) Only replaceable at Z 6 - 11, d < 20mm

5) Not for supply voltage 190...210V/60Hz

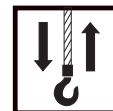
6) Only for supply voltage 190...210V/60Hz



8/2F13
SA-C ... 133



Pos	Teil-Nummer Part-Number	Stück Piece	Beschreibung Description				Benennung Designation	Designation	
					Z	d			
	21 270 81 11 9	1	SF 17 111 133	1)	(Pos.1-23)	7	10,75	Motor kompl.	Motor compl.
		1		1)	(Pos.1-23)				
	21 270 80 11 9	1	SF 11 217 133	1)	(Pos.1-23)	9	12,85		
		1	SF 17 109 133	1)	(Pos.1-23)				
		1	SF 17 217 133	1)	(Pos.1-23)				
		1	SF 25 226 133	1)	(Pos.1-23)				
		1	SF 25 228 133	1)	(Pos.1-23)				
		1	SA-C 57 38 133	1)	(Pos.1-23)				
		1	SA-C 57 40 133	1)	(Pos.1-23)				
		1	SA-C 67 42 133	1)	(Pos.1-23)				
		1	SA-C 67 44 133	1)	(Pos.1-23)				
		1	SA-C 67 46 133	1)	(Pos.1-23)				
	21 270 79 11 9	1	SF 11 215 133	1)	(Pos.1-23)	11	14,95		
		1	SF 17 107 133	1)	(Pos.1-23)				
		1	SF 17 215 133	1)	(Pos.1-23)				
		1	SF 15 222 133	1)	(Pos.1-23)				
	21 270 78 11 9	1	SF 11 213 133	1)	(Pos.1-23)	9	19,20		
		1	SF 11 220 133	1)	(Pos.1-23)				
		1	SF 17 213 133	1)	(Pos.1-23)				
		1	SF 15 220 133	1)	(Pos.1-23)				
		1	SF 25 222 133	1)	(Pos.1-23)				
		1	SF 25 224 133	1)	(Pos.1-23)				
	21 270 77 11 9	1	SF 11 211 133	1)	(Pos.1-23)	11	22,30		
		1	SF 17 211 133	1)	(Pos.1-23)				
		1	SF 15 218 133	1)	(Pos.1-23)				
		1	SA-C 57 32 133	1)	(Pos.1-23)				
		1	SA-C 57 34 133	1)	(Pos.1-23)				
		1	SA-C 57 36 133	1)	(Pos.1-23)				
		1	SA-C 67 36 133	1)	(Pos.1-23)				
		1	SA-C 67 38 133	1)	(Pos.1-23)				
		1	SA-C 67 40 133	1)	(Pos.1-23)				



Pos	Teil-Nummer Part-Number	Stück Piece	Beschreibung Description				Z	d	Benennung	Designation
	21 270 76 11 9	1	SF 17 209 133	1)	(Pos.1-23)	9	27,85	Motor kompl.	Motor complete	
		1	SF 15 216 133	1)	(Pos.1-23)					
		1	SF 25 218 133	1)	(Pos.1-23)					
		1	SF 25 220 133	1)	(Pos.1-23)					
	21 270 75 11 9	1	SF 17 207 133	1)	(Pos.1-23)	11	32,35			
		1	SF 15 214 133	1)	(Pos.1-23)					
	21 270 71 11 9	1	SF 35 832 133	1)	(Pos.1-23)	13	36,90			
		1	SF 35 834 133	1)	(Pos.1-23)					
		1	SF 35 836 133	1)	(Pos.1-23)					
		1	SF 25 830 133	1)	(Pos.1-23)					
		1	SF 25 832 133	1)	(Pos.1-23)					
		1	SF 25 834 133	1)	(Pos.1-23)					
3	567 135 0	1	104 - 120V	2)	190 - 460V	50Hz	3)	Bremsen	Brake	
	567 188 0	1	130 - 150V	2)	480 - 525V	50Hz	3)			
	567 189 0	1	156 - 180V	2)	575 - 720V	50Hz	3)			
4	502 942 0	3	M4x45		ISO 4762			Zyl-Schraube	Socket head cap screw	
5	567 100 0	1	Gr.08					Bremsrotor	Brake rotor	
6	567 349 0	1						Nabe	Hub	
7	537 011 0	1	5x5x16		DIN 6885			Passfeder	Feather key	
8	506 093 0	1	15x1		DIN 471			Sicherungsring	Circlip	
10	576 051 0	1						Lüfterrad	Fan wheel	
12	567 344 0	1						Lüfterhaube	Fan cowling	
14	561 012 0	1	20x35x7	4)				Wellendichtring	Shaft seal	
15	560 091 0	1	6204-2RS		DIN 625			Rillenkugellager	Grooved ball bearing	
18	560 017 0	1	6202-2RS		DIN 625			Rillenkugellager	Grooved ball bearing	
21	567 108 0	1	PME400	5)				Gleichrichter	Rectifier	
	567 190 0	1	PMB400	6)						
22	570 076 0	1						Klemmenkasten	Terminal box	
23	567 347 0	1						Klemmenkastendeckel	Terminal box cover	
25	500 231 0	4	M6x20		ISO 4762-8.8			Zyl-Schraube	Socket head cap screw	
26	506 838 0	4	S6					Sicherungsscheibe	Lock washer	
28	515 020 0	1	130x2		SF1.			Runddichtring	Round sealing ring	
	515 953 0	1	70x2		SF25; SF35; SA-C.7					

1) Bitte Betriebsspannung, Frequenz, Getriebemotortyp und Motortyp angeben.

1) Please state operating voltage, frequency, type of geared motor and type of motor.

2) Spulenspannung

2) Coil voltage

3) Betriebsspannung Motor

3) Operating voltage motor

4) nur austauschbar bei Z 7 - 11, d < 20mm

4) Only replaceable at Z 7 - 11, d < 20mm

5) Nicht für Motorspannungen 190...210V/60Hz

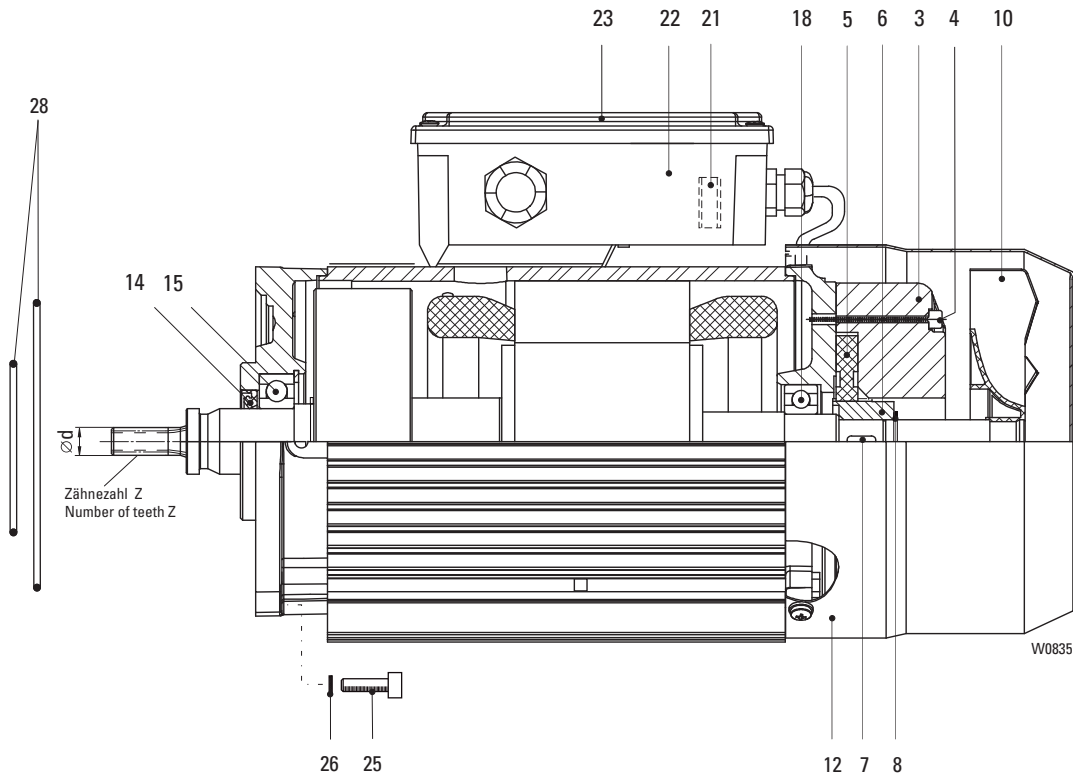
5) Not for supply voltage 190...210V/60Hz

6) Nur für Motorspannungen 190...210V/60Hz

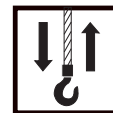
6) Only for supply voltage 190...210V/60Hz



8/2F31
SA-C ... 313



Pos	Teil-Nummer Part-Number	Stück Piece	Beschreibung Description	Benennung Designation
	23 270 77 11 9	1	SF 11 217 313 1) (Pos.1-23)	Motor kompl. Motor compl.
		1	SF 25 226 313 1) (Pos.1-23)	
		1	SF 25 228 313 1) (Pos.1-23)	
		1	SA-C 57 38 313 1) (Pos.1-23)	
		1	SA-C 67 42 313 1) (Pos.1-23)	
		1	SA-C 67 44 313 1) (Pos.1-23)	
	23 270 76 11 9	1	SF 11 213 313 1) (Pos.1-23)	
		1	SF 17 213 313 1) (Pos.1-23)	
		1	SF 25 222 313 1) (Pos.1-23)	
		1	SF 25 224 313 1) (Pos.1-23)	
		1	SF 35 226 313 1) (Pos.1-23)	
		1	SF 35 228 313 1) (Pos.1-23)	
	23 270 79 11 9	1	SF 25 218 313 1) (Pos.1-23)	Motor kompl. Motor compl.
		1	SF 25 220 313 1) (Pos.1-23)	
	23 270 75 11 9	1	SF 25 216 313 1) (Pos.1-23)	Motor kompl. Motor compl.
		1	SF 35 834 313 1) (Pos.1-23)	
		1	SF 35 832 313 1) (Pos.1-23)	
	23 270 71 11 9	1	SF 11 215 313 1) (Pos.1-23)	Motor kompl. Motor compl.
		1	SF 35 230 313 1) (Pos.1-23)	
	23 270 80 11 9	1	SA-C 57 36 313 1) (Pos.1-23)	Motor kompl. Motor compl.
		1	SA-C 57 34 313 1) (Pos.1-23)	
		1	SA-C 57 32 313 1) (Pos.1-23)	
		1	SA-C 57 30 313 1) (Pos.1-23)	
		1	SA-C 57 28 313 1) (Pos.1-23)	
		1	SA-C 57 26 313 1) (Pos.1-23)	
		1	SA-C 67 40 313 1) (Pos.1-23)	
		1	SA-C 67 38 313 1) (Pos.1-23)	
		1	SA-C 67 36 313 1) (Pos.1-23)	
		1	SA-C 67 34 313 1) (Pos.1-23)	
		1	SA-C 67 32 313 1) (Pos.1-23)	
		1	SA-C 67 30 313 1) (Pos.1-23)	



Pos	Teil-Nummer Part-Number	Stück Piece	Beschreibung Description				Benennung	Designation	
3	567 128 0	1	104 - 120V	2)	190 - 460V	50Hz	3)	Bremse	Brake
	567 129 0	1	130 - 150V	2)	480 - 525V	50Hz	3)		
	567 130 0	1	156 - 180V	2)	575 - 720V	50Hz	3)		
4	500 389 0	3	M6x55		ISO 4762			Zyl-Schraube	Socket head cap screw
5	567 360 0	1						Bremsrotor	Brake rotor
6	567 362 0	1						Nabe	Hub
7	537 008 0	1	6x6x16		DIN 6885			Passfeder	Feather key
8	506 095 0	1	20x1,2		DIN 471			Sicherungsring	Circlip
10	576 052 0	1						Lüfterrad	Fan wheel
12	567 345 0	1						Lüfterhaube	Fan cowl
14	561 053 0	1	30x47x7	4)				Wellendichtring	Shaft seal
15	560 089 0	1	6206-2Z JC3		DIN 625			Rillenkugellager	Grooved ball bearing
18	560 096 0	1	6205-2Z JC3		DIN 625			Rillenkugellager	Grooved ball bearing
21	567 108 0	1	PME400	5)				Gleichrichter	Rectifier
	567 190 0	1	PMB400	6)					
22	570 077 0	1						Klemmenkasten	Terminal box
23	567 348 0	1						Klemmenkastendeckel	Terminal box cover
25	500 148 0	4	M10x25	SF.; SA-C	ISO 4762-8.8			Zyl-Schraube	Socket head cap screw
	500 236 0	4	M10x30	SF 25	DIN 912-8.8				
26	506 840 0	4	S10					Sicherungsscheibe	Lock washer
28	515 020 0	1	130x2		SF1.			Runddichtring	Round sealing ring
	515 953 0	1	70x2		SF25; SF35; SA-C.7				

1) Bitte Betriebsspannung, Frequenz, Getriebemotortyp und Motortyp angeben.

2) Spulenspannung

3) Betriebsspannung Motor

4) nur austauschbar bei Z 9 - 11, d < 30mm

5) Nicht für Motorspannungen 190...210V/60Hz

6) Nur für Motorspannungen 190...210V/60Hz

1) Please state operating voltage, frequency, type of geared motor and type of motor.

2) Coil voltage

3) Operating voltage motor

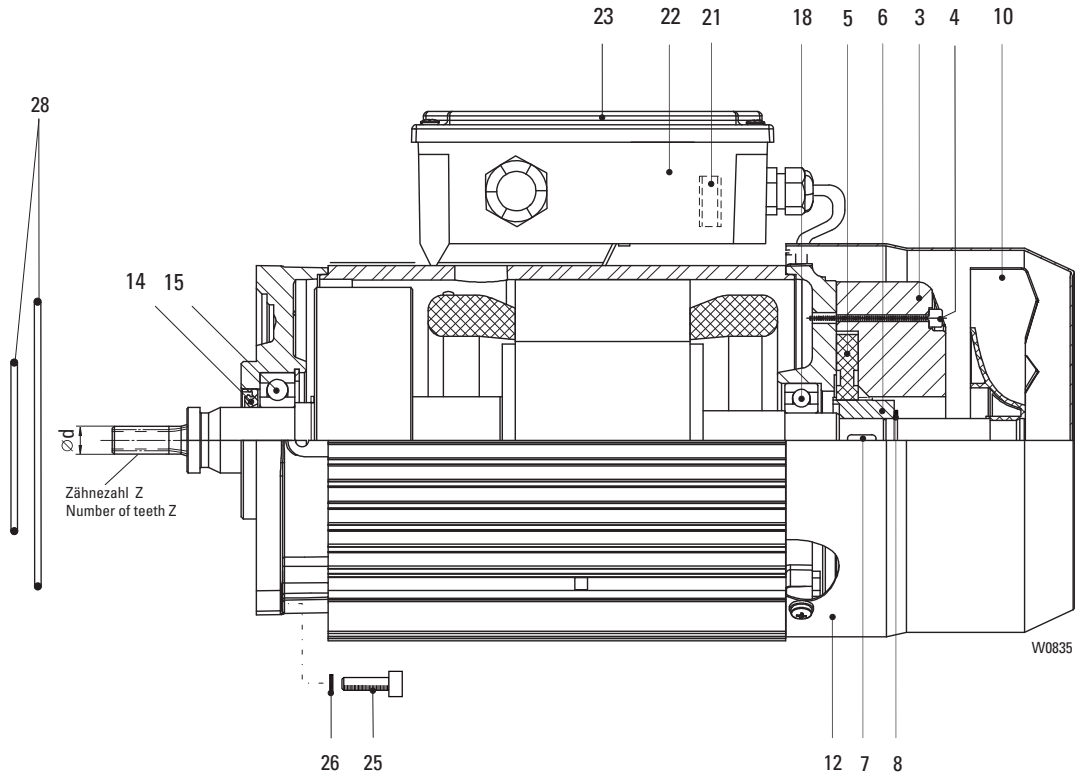
4) Only replaceable at Z 9 - 11, d < 30mm

5) Not for supply voltage 190...210V/60Hz

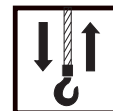
6) Only for supply voltage 190...210V/60Hz



8/2F42
SA-C ... 423



Pos	Teil-Nummer Part-Number	Stück Piece	Beschreibung Description				Benennung Designation	Designation
					Z	d		
	24 270 81 11 9	1	SF 25 216 423	1)	(Pos.1-23)	13	36,90	Motor kompl. Motor compl.
	24 270 82 11 9	1	SF 25 218 423	1)	(Pos.1-23)	9	27,85	
		1	SF 25 220 423	1)	(Pos.1-23)			
		1	SF 35 224 423	1)	(Pos.1-23)			
		1	SF 35 222 423	1)	(Pos.1-23)			
	24 270 80 11 9	1	SF 35 230 423	1)	(Pos.1-23)	11	14,95	
	24 270 79 11 9	1	SF 25 224 423	1)	(Pos.1-23)	9	19,20	
		1	SF 25 222 423	1)	(Pos.1-23)			
		1	SF 35 228 423	1)	(Pos.1-23)			
		1	SF 35 226 423	1)	(Pos.1-23)			
	24 270 65 11 9	1	SA-C 57 32 423	1)	(Pos.1-23)	11	22,30	
		1	SA-C 57 30 423	1)	(Pos.1-23)			
		1	SA-C 57 28 423	1)	(Pos.1-23)			
		1	SA-C 57 26 423	1)	(Pos.1-23)			
		1	SA-C 67 38 423	1)	(Pos.1-23)			
		1	SA-C 67 36 423	1)	(Pos.1-23)			
		1	SA-C 67 34 423	1)	(Pos.1-23)			
		1	SA-C 67 32 423	1)	(Pos.1-23)			
		1	SA-C 67 30 423	1)	(Pos.1-23)			



Pos	Teil-Nummer Part-Number	Stück Piece	Beschreibung Description			Benennung	Designation	
3	567 131 0	1	104 - 120V	2)	190 - 460V 50Hz	3)	Bremse	Brake
	567 132 0	1	130 - 150V	2)	480 - 525V 50Hz	3)		
	567 133 0	1	156 - 180V	2)	575 - 720V 50Hz	3)		
4	500 389 0	3	M6x55		ISO 4762		Zyl-Schraube	Socket head cap screw
5	567 360 0	1					Bremsrotor	Brake rotor
6	567 362 0	1					Nabe	Hub
7	537 008 0	1	6x6x16		DIN 6885		Passfeder	Feather key
8	506 095 0	1	20x1,2		DIN 471		Sicherungsring	Circlip
10	576 052 0	1					Lüfterrad	Fan wheel
12	567 345 0	1					Lüfterhaube	Fan cowling
14	561 053 0	1	30x47x7	4)			Wellendichtring	Shaft seal
15	560 089 0	1	6206-2Z JC3		DIN 625		Rillenkugellager	Grooved ball bearing
18	560 096 0	1	6205-2ZJ C3		DIN 625		Rillenkugellager	Grooved ball bearing
21	567 108 0	1	PME400	5)			Gleichrichter	Rectifier
	567 190 0	1	PMB400	6)				
22	570 077 0	1					Klemmenkasten	Terminal box
23	567 348 0	1					Klemmenkastendeckel	Terminal box cover
25	500 148 0	4	M10x25	SF 35; SA-C	ISO 4762-8.8		Zyl-Schraube	Socket head cap screw
	500 236 0	4	M10x30	SF 25	DIN 912-8.8			
26	506 840 0	4	S10				Sicherungsscheibe	Lock washer
28	515 953 0	1	70x2		SF25; SF35; SA-C.7		Runddichtring	Round sealing ring

1) Bitte Betriebsspannung, Frequenz, Getriebemotortyp und Motortyp angeben.

1) Please state operating voltage, frequency, type of geared motor and type of motor.

2) Spulenspannung

2) Coil voltage

3) Betriebsspannung Motor

3) Operating voltage motor

4) nur austauschbar bei Z 9 - 11, d < 30mm

4) Only replaceable at Z 9 - 11, d < 30mm

5) Nicht für Motorspannungen 190...210V/60Hz

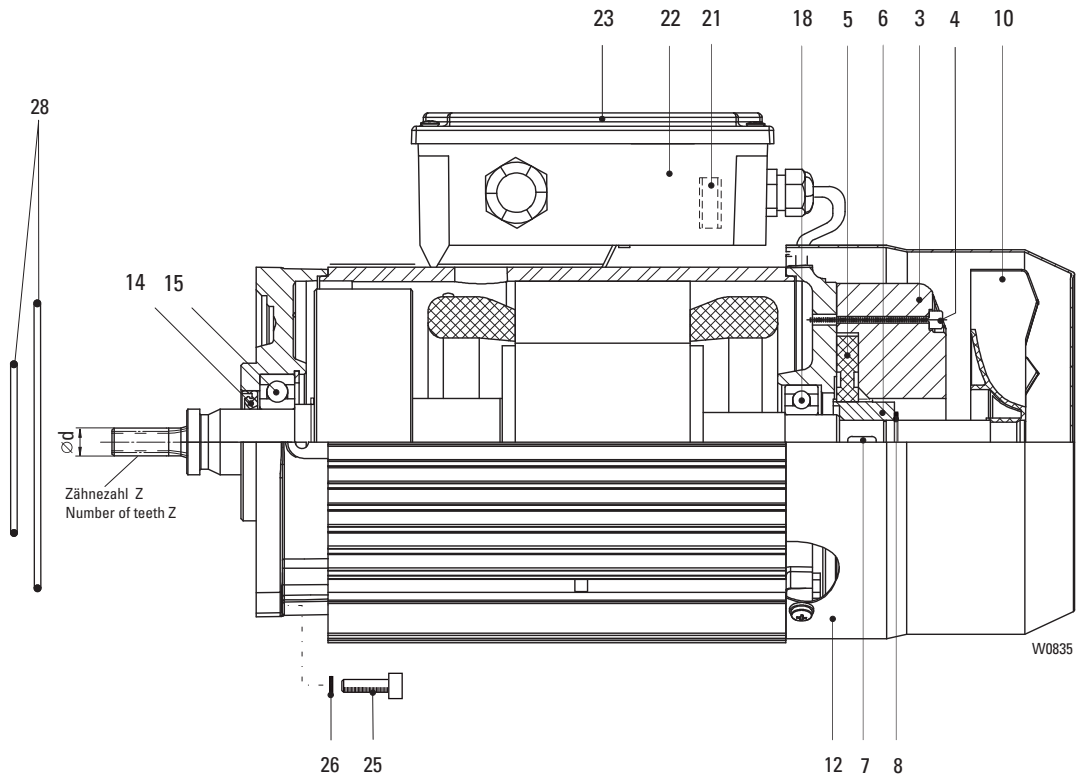
5) Not for supply voltage 190...210V/60Hz

6) Nur für Motorspannungen 190...210V/60Hz

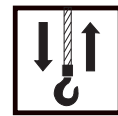
6) Only for supply voltage 190...210V/60Hz



4F18
SA-C ... 184



Pos	Teil-Nummer Part-Number	Stück Piece	Beschreibung Description	Benennung Designation	Benennung Designation			
	21 270 62 11 9	1	SF 17 207 184	1) (Pos.1-23)	Z	d	Motor kompl.	Motor compl.
		1	SF 15 214 184	1) (Pos.1-23)	11	32,35		
	21 270 63 11 9	1	SF 17 209 184	1) (Pos.1-23)	9	27,85		
		1	SF 15 216 184	1) (Pos.1-23)				
		1	SF 25 200 184	1) (Pos.1-23)				
		1	SF 25 218 184	1) (Pos.1-23)				
	21 270 64 11 9	1	SF 11 211 184	1) (Pos.1-23)	11	22,30		
		1	SF 17 211 184	1) (Pos.1-23)				
		1	SF 15 218 184	1) (Pos.1-23)				
		1	SA-C 57 32 184	1) (Pos.1-23)				
		1	SA-C 57 34 184	1) (Pos.1-23)				
	21 270 65 11 9	1	SF 17 213 184	1) (Pos.1-23)	9	19,20		
		1	SF 15 220 184	1) (Pos.1-23)				
		1	SF 25 224 184	1) (Pos.1-23)				
		1	SF 25 222 184	1) (Pos.1-23)				
	21 270 66 11 9	1	SF 11 215 184	1) (Pos.1-23)	11	14,95		
		1	SF 17 215 184	1) (Pos.1-23)				
		1	SF 17 107 184	1) (Pos.1-23)				
		1	SF 15 222 184	1) (Pos.1-23)				
	21 270 67 11 9	1	SF 11 224 184	1) (Pos.1-23)	9	12,85		
		1	SF 17 217 184	1) (Pos.1-23)				
		1	SF 17 109 184	1) (Pos.1-23)				
		1	SF 15 224 184	1) (Pos.1-23)				
		1	SF 25 228 184	1) (Pos.1-23)				
		1	SF 25 226 184	1) (Pos.1-23)				
		1	SA-C 57 40 184	1) (Pos.1-23)				
		1	SA-C 57 42 184	1) (Pos.1-23)				
		1	SA-C 67 40 184	1) (Pos.1-23)				
		1	SA-C 67 42 184	1) (Pos.1-23)				



Pos	Teil-Nummer Part-Number	Stück Piece	Beschreibung Description					Benennung Designation	Designation	
						Z	d			
	21 270 68 11 9	1	SF 17 219 184	1)	(Pos.1-23)		7	10,75	Motor kompl. Motor compl.	Motor compl.
		1	SF 17 111 184	1)	(Pos.1-23)					
		1	SF 15 226 184	1)	(Pos.1-23)					
		1	SF 25 230 184	1)	(Pos.1-23)					
	21 270 69 11 9	1	SF 17 113 184	1)	(Pos.1-23)		6	9,60		
	21 270 61 11 9	1	SF 25 834 184	1)	(Pos.1-23)		13	36,90		
		1	SF 25 832 184	1)	(Pos.1-23)					
		1	SF 35 836 184	1)	(Pos.1-23)					
		1	SF 35 834 184	1)	(Pos.1-23)					
		1	SF 35 832 184	1)	(Pos.1-23)					
3	567 135 0 567 134 0	1 1	104 - 120V 180 - 207V	2) 2)	190 - 240V 380 - 460V	50Hz 50Hz	3) 3)		Bremse Brake	
4	502 942 0	3	M4x45		ISO 4762				Zyl-Schraube	Socket head cap screw
5	567 100 0	1	Gr.08						Bremsrotor	Brake rotor
6	567 349 0	1							Nabe	Hub
7	537 011 0	1	5x5x16		DIN 6885				Passfeder	Feather key
8	506 093 0	1	15x1		DIN 471				Sicherungsring	Circlip
10	576 051 0	1							Lüfterrad	Fan wheel
12	567 344 0	1							Lüfterhaube	Fan cowling
14	561 012 0	1	20x35x7	4)					Wellendichtring	Shaft seal
15	560 091 0	1	6204-2RS		DIN 625				Rillenkugellager	Grooved ball bearing
18	560 017 0	1	6202-2RS		DIN 625				Rillenkugellager	Grooved ball bearing
21	567 108 0	1	PME400	5)					Gleichrichter	Rectifier
	567 367 0	1	PME500	6)						
22	570 077 0	1							Klemmenkasten	Terminal box
23	567 347 0	1							Klemmenkastendeckel	Terminal box cover
25	500 231 0	4	M6x20		ISO 4762-8.8				Zyl-Schraube	Socket head cap screw
26	506 838 0	4	S6						Sicherungsscheibe	Lock washer
28	515 020 0	1	130x2		SF1.				Runddichtring	Round sealing ring
	515 953 0	1	70x2		SF25; SF35;SA-C					

1) Bitte Betriebsspannung, Frequenz, Getriebemotortyp und Motortyp angeben.

2) Spulenspannung

3) Betriebsspannung Motor

4) nur austauschbar bei Z 6 - 11, d < 20mm

5) Nicht für Motorspannungen 380...460V/50Hz, 440...480V/60Hz

6) Nur für Motorspannungen 380...460V/50Hz, 440...480V/60Hz

1) Please state operating voltage, frequency, type of geared motor and type of motor.

2) Coil voltage

3) Operating voltage motor

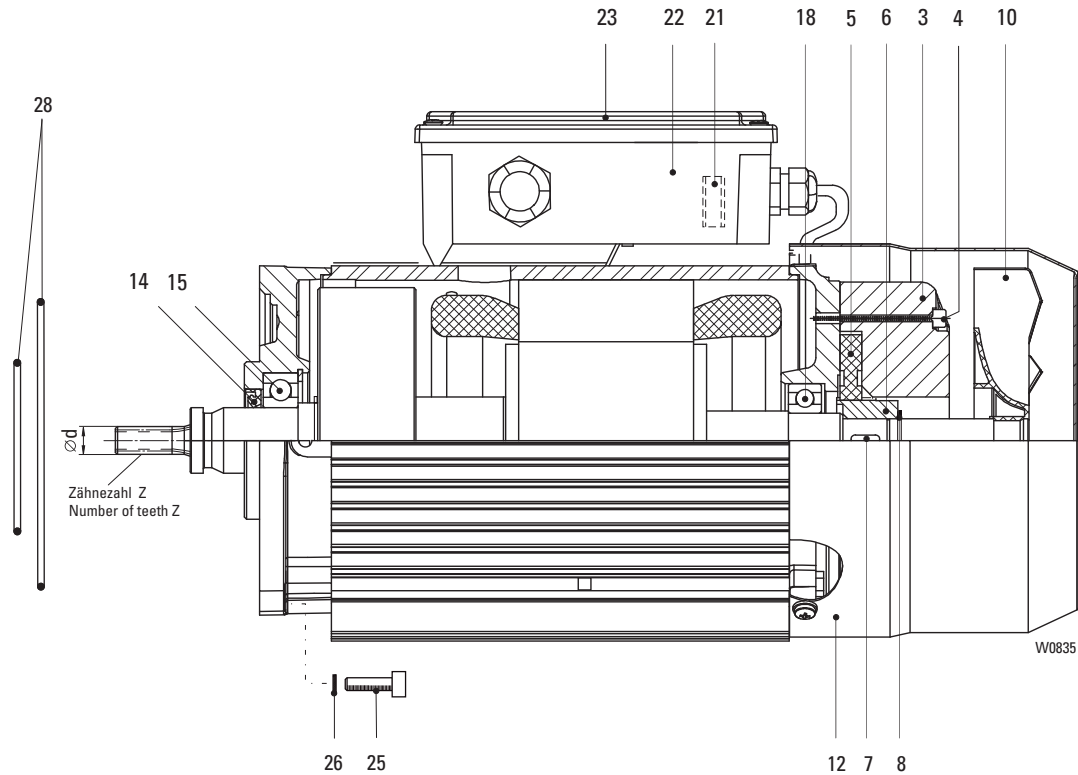
4) Only replaceable at Z 6 - 11, d < 20mm

5) Not for supply voltage 380...460V/50Hz, 440...480V/60Hz

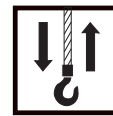
6) Only for supply voltage 380...460V/50Hz, 440...480V/60Hz



4F38
SA-C ... 384



Pos	Teil-Nummer Part-Number	Stück Piece	Beschreibung Description		Z		d		Benennung	Designation
	23 270 57 11 9	1	SF 17 207 384	1) (Pos.1-23)	11	32,35	Motor kompl.	Motor compl.		
		1	SF 15 214 384	1) (Pos.1-23)						
		1	SA-C 57 24 384	1) (Pos.1-23)						
	23 270 58 11 9	1	SF 17 209 384	1) (Pos.1-23)	9	27,85				
		1	SF 15 216 384	1) (Pos.1-23)						
		1	SF 25 220 384	1) (Pos.1-23)						
		1	SF 25 218 384	1) (Pos.1-23)						
		1	SF 35 224 384	1) (Pos.1-23)						
		1	SF 35 224 384	1) (Pos.1-23)						
	23 270 59 11 9	1	SF 17 211 384	1) (Pos.1-23)	11	22,30				
		1	SF 15 218 384	1) (Pos.1-23)						
		1	SF 11 211 384	1) (Pos.1-23)						
		1	SA-C 57 26 384	1) (Pos.1-23)						
		1	SA-C 57 28 384	1) (Pos.1-23)						
		1	SA-C 57 30 384	1) (Pos.1-23)						
		1	SA-C 57 32 384	1) (Pos.1-23)						
		1	SA-C 57 34 384	1) (Pos.1-23)						
		1	SA-C 67 32 384	1) (Pos.1-23)						
		1	SA-C 67 34 384	1) (Pos.1-23)						
		1	SA-C 67 34 384	1) (Pos.1-23)						
		1	SA-C 67 36 384	1) (Pos.1-23)						
			23 270 60 11 9	1					SF 15 220 384	1) (Pos.1-23)
1	SF 17 213 384			1) (Pos.1-23)						
1	SF 25 224 384			1) (Pos.1-23)						
1	SF 25 222 384			1) (Pos.1-23)						
1	SF 35 228 384			1) (Pos.1-23)						
1	SF 35 226 384			1) (Pos.1-23)						
1	SF 35 226 384			1) (Pos.1-23)						
	23 270 61 11 9	1	SF 35 230 384	1) (Pos.1-23)	11	14,95				
	23 270 62 11 9	1	SF 25 228 384	1) (Pos.1-23)	9	12,85				
		1	SF 25 226 384	1) (Pos.1-23)						
		1	SA-C 57 40 384	1) (Pos.1-23)						
		1	SA-C 67 42 384	1) (Pos.1-23)						
	23 270 56 11 9	1	SF 25 216 384	1) (Pos.1-23)	13	36,90				
		1	SF 35 834 384	1) (Pos.1-23)						
		1	SF 35 832 384	1) (Pos.1-23)						



Pos	Teil-Nummer Part-Number	Stück Piece	Beschreibung Description			Benennung	Designation	
3	567 131 0	1	104 - 120V	2)	190 - 240V 50Hz	3)	Bremse	Brake
	567 136 0	1	180 - 207V	2)	380 - 460V 50Hz	3)		
4	500 389 0	3	M6x55		ISO 4762		Zyl-Schraube	Socket head cap screw
5	567 360 0	1					Bremsrotor	Brake rotor
6	567 362 0	1					Nabe	Hub
7	537 008 0	1	6x6x16		DIN 6885		Passfeder	Feather key
8	506 095 0	1	20x1,2		DIN 471		Sicherungsring	Circlip
10	576 052 0	1					Lüfterrad	Fan wheel
12	567 345 0	1					Lüfterhaube	Fan cowling
14	561 053 0	1	30x47x7	4)			Wellendichtring	Shaft seal
15	560 089 0	1	6206-2Z JC3		DIN 625		Rillenkugellager	Grooved ball bearing
18	560 096 0	1	6205-2Z JC3		DIN 625		Rillenkugellager	Grooved ball bearing
21	567 108 0	1	PME400	5)			Gleichrichter	Rectifier
	567 367 0	1	PME500	6)				
22	570 077 0	1					Klemmenkasten	Terminal box
23	567 348 0	1					Klemmenkastendeckel	Terminal box cover
25	500 148 0	4	M10x25	SF1.	ISO 4762-8.8		Zyl-Schraube	Socket head cap screw
	500 236 0	4	M10x30	SF25; SF35	DIN 912-8.8			
26	506 840 0	4	S10				Sicherungsscheibe	Lock washer
28	515 020 0	1	130x2		SF1.		Runddichtring	Round sealing ring
	515 953 0	1	70x2		SF25; SF35			

1) Bitte Betriebsspannung, Frequenz, Getriebemotortyp und Motortyp angeben.

2) Spulenspannung

3) Betriebsspannung Motor

4) nur austauschbar bei Z 9 - 11, d < 30mm

5) Nicht für Motorspannungen 380...460V/50Hz, 440...480V/60Hz

6) Nur für Motorspannungen 380...460V/50Hz, 440...480V/60Hz

1) Please state operating voltage, frequency, type of geared motor and type of motor.

2) Coil voltage

3) Operating voltage motor

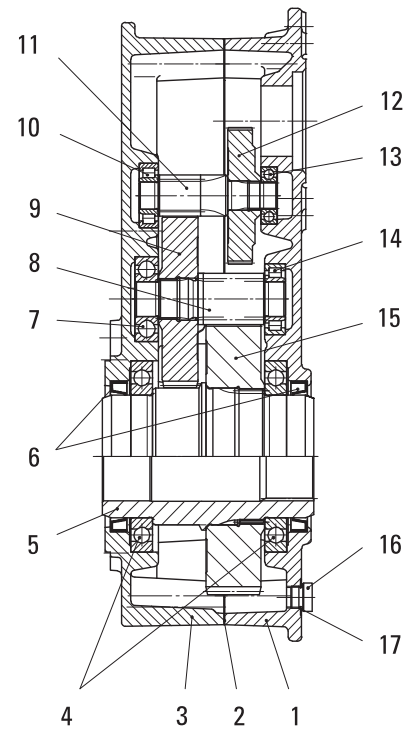
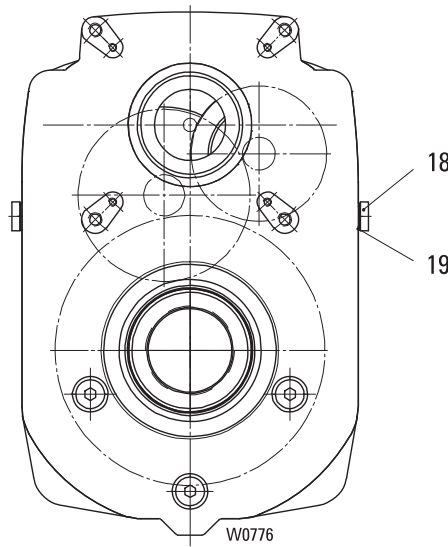
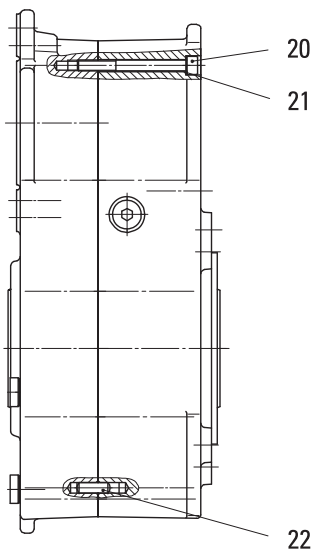
4) Only replaceable at Z 9 - 11, d < 30mm

5) Not for supply voltage 380...460V/50Hz, 440...480V/60Hz

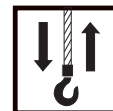
6) Only for supply voltage 380...460V/50Hz, 440...480V/60Hz



Getriebe / gear
SA-C 57



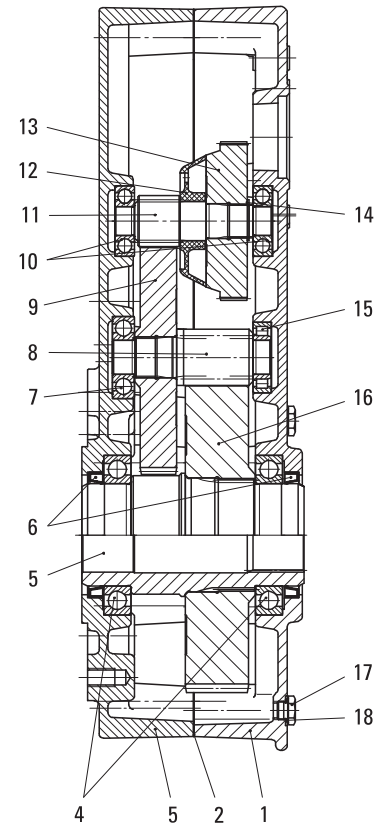
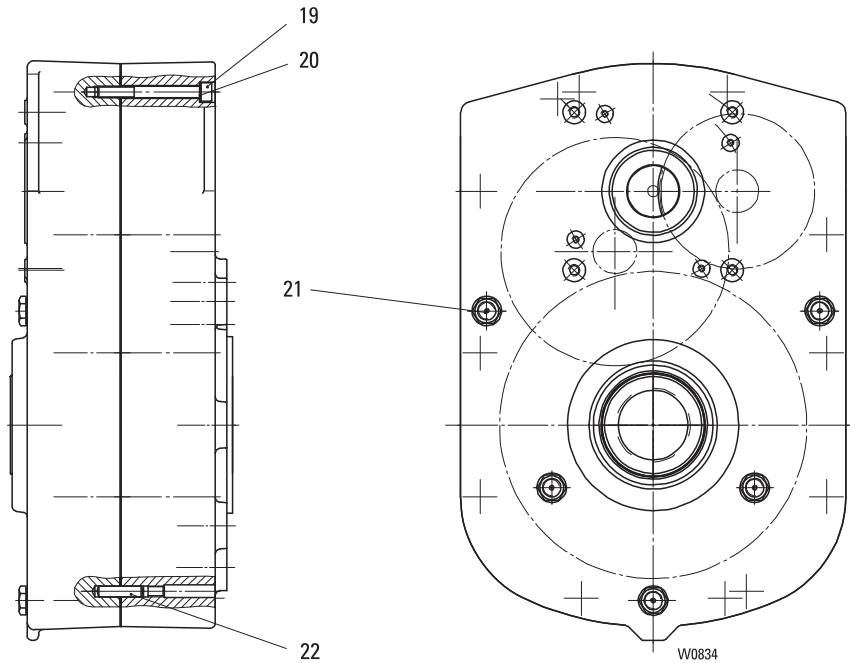
Pos	Teil-Nummer Part-Number	Stück Piece	Beschreibung Description	Benennung Designation	Designation		
	15 270 11 30 0	1	SA-. 57 42 (Pos.1-22)	Getriebe	Gear		
	15 270 12 30 0	1	SA-. 57 40 (Pos.1-22)				
	15 270 13 30 0	1	SA-. 57 38 (Pos.1-22)				
	15 270 14 30 0	1	SA-. 57 36 (Pos.1-22)				
	15 270 15 30 0	1	SA-. 57 34 (Pos.1-22)				
	15 270 16 30 0	1	SA-. 57 32 (Pos.1-22)				
	15 270 17 30 0	1	SA-. 57 30 (Pos.1-22)				
	15 270 18 30 0	1	SA-. 57 28 (Pos.1-22)				
	15 270 19 30 0	1	SA-. 57 26 (Pos.1-22)				
	15 270 20 30 0	1	SA-. 57 24 (Pos.1-22)				
	15 270 21 30 0	1	SA-. 57 22 (Pos.1-22)				
1	15 277 04 01 0	1				Getriebegehäuse	Gear box
2	33 255 00 95 0	1				Dichtung	Seal
3	15 277 02 02 0	1		Getriebedeckel	Gear cap		
4	560 856 0	2	16018-C3	Rillenkugellager	Grooved ball bearing		
5	15 277 01 23 0	1		Abtriebswelle	Drive shaft		
6	561 806 0	2	A9x110x12	Wellendichtring	Shaft seal		
7	560 020 0	1	6305	Rillenkugellager	Grooved ball bearing		
8	15 277 13 19 0	1	SA-. 57 42	Ritzelwelle	Pinion		
		1	SA-. 57 36				
		1	SA-. 57 38				
		1	SA-. 57 32				
		1	SA-. 57 24				
	15 277 14 19 0	1	SA-. 57 40				
		1	SA-. 57 34				
		1	SA-. 58 30				
		1	SA-. 57 28				
		1	SA-. 57 26				
		1	SA-. 57 22				
9	15 277 13 11 0	1	SA-. 57 42	Zahnrad	Toothed wheel		
		1	SA-. 57 40				
		1	SA-. 57 36				
		1	SA-. 57 34				
	15 277 14 11 0	1	SA-. 57 38				
		1	SA-. 57 32				
		1	SA-. 57 30				
	15 277 15 11 0	1	SA-. 57 28				
		1	SA-. 57 26				
		1	SA-. 57 24				
		1	SA-. 57 22				



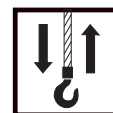
Pos	Teil-Nummer Part-Number	Stück Piece	Beschreibung Description	Benennung Designation	Designation	
10	560 812 0	1	NJ 204 EC	DIN 5412	Zyl-Rollenlager	Roller bearing
11	15 277 10 19 0	1	SA-. 57 42	z=12	Ritzelwelle	Pinion
		1	SA-. 57 40			
		1	SA-. 57 36			
		1	SA-. 57 34			
	15 277 11 19 0	1	SA-. 57 38	z=17		
		1	SA-. 57 32			
	15 277 12 19 0	1	SA-. 57 30	z=24		
		1	SA-. 57 28			
		1	SA-. 57 26			
		1	SA-. 57 24			
12	15 277 10 11 0	1	SA-. 57 42	z=91	Zahnrad	Toothed wheel
		1	SA-. 57 40			
		1	SA-. 57 38			
		1	SA-. 57 36			
	15 277 11 11 0	1	SA-. 57 34	z=56		
		1	SA-. 57 32			
		1	SA-. 57 30			
		1	SA-. 57 28			
	15 277 12 11 0	1	SA-. 57 26	z=35		
		1	SA-. 57 24			
13	560 044 0	1	6004-2RS	DIN 625	Rillenkugellager	Grooved ball bearing
14	560 131 0	1	NJ205 E	DIN 5412	Zyl-Rollenlager	Roller bearing
15	15 277 16 11 0	1	SA-. 57 42	z=79	Zahnrad	Toothed wheel
		1	SA-. 57 38			
		1	SA-. 57 36			
		1	SA-. 57 32			
	15 277 17 11 0	1	SA-. 57 28			
		1	SA-. 57 24			
		1	SA-. 57 40	z=77		
		1	SA-. 57 34			
		1	SA-. 57 30			
		1	SA-. 57 26			
1	SA-. 57 22					
16	503 912 0	4	AM16x1,5		DIN 7604	Verschlussschraube
17	515 004 0	4	C16x20	DIN 7603	Dichtring	Sealing ring
18	32 250 00 57 0	1			Verschlussschraube	Screw plug
19	515 004 0	1	C16x20	DIN 7603	Dichtring	Sealing ring
20	500 859 0	10	M8x80	ISO 4762	Zyl-Schraube	Socket head cap screw
21	506 839 0	10	S8		Sicherungsscheibe	Locking disc
22	504 960 0	2	8m6x24	ISO 2338	Zyl-Stift	Dowel pin



Getriebe / gear
SA-C 67



Pos	Teil-Nummer Part-Number	Stück Piece	Beschreibung Description	Benennung Designation	
	16 270 09 30 0	1	SA-. 67 46 (Pos.1-22)	Getriebe Gear	
	16 270 10 30 0	1	SA-. 67 44 (Pos.1-22)		
	16 270 11 30 0	1	SA-. 67 42 (Pos.1-22)		
	16 270 12 30 0	1	SA-. 67 40 (Pos.1-22)		
	16 270 13 30 0	1	SA-. 67 38 (Pos.1-22)		
	16 270 14 30 0	1	SA-. 67 36 (Pos.1-22)		
	16 270 15 30 0	1	SA-. 67 34 (Pos.1-22)		
	16 270 16 30 0	1	SA-. 67 32 (Pos.1-22)		
	16 270 17 30 0	1	SA-. 67 30 (Pos.1-22)		
	16 270 18 30 0	1	SA-. 67 28 (Pos.1-22)		
	16 270 19 30 0	1	SA-. 67 26 (Pos.1-22)		
1	16 277 02 01 0	1			Getriebegehäuse Gear box
2	34 255 00 95 0	1			Dichtung Seal
3	16 277 02 02 0	1		Getriebedeckel Gear cover	
4	560 113 0	2	16018-C3 DIN 625	Rillenkugellager Grooved ball bearing	
5	16 277 01 23 0	1		Abtriebswelle Drive shaft	
6	561 806 0	2	A90x110x12 DIN 3760	Wellendichtring Shaft seal	
7	560 168 0	1	6306 DIN 625	Rillenkugellager Grooved ball bearing	
8	16 277 13 19 0	1	SA-. 67 46 z=11	Ritzelwelle Pinion	
		1	SA-. 67 42		
		1	SA-. 67 40		
		1	SA-. 67 36		
		1	SA-. 67 32		
	16 277 14 19 0	1	SA-. 67 28 z=13		
		1	SA-. 67 44		
		1	SA-. 67 38		
		1	SA-. 67 34		
		1	SA-. 67 30		
		1	SA-. 67 26		



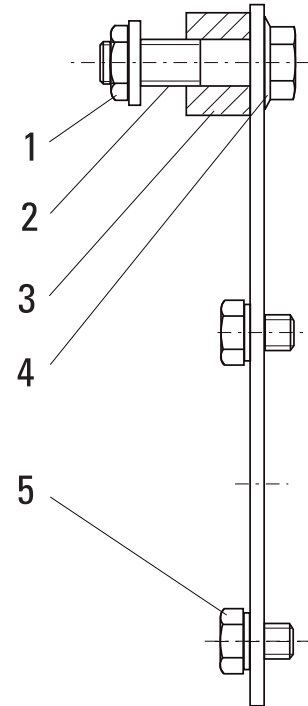
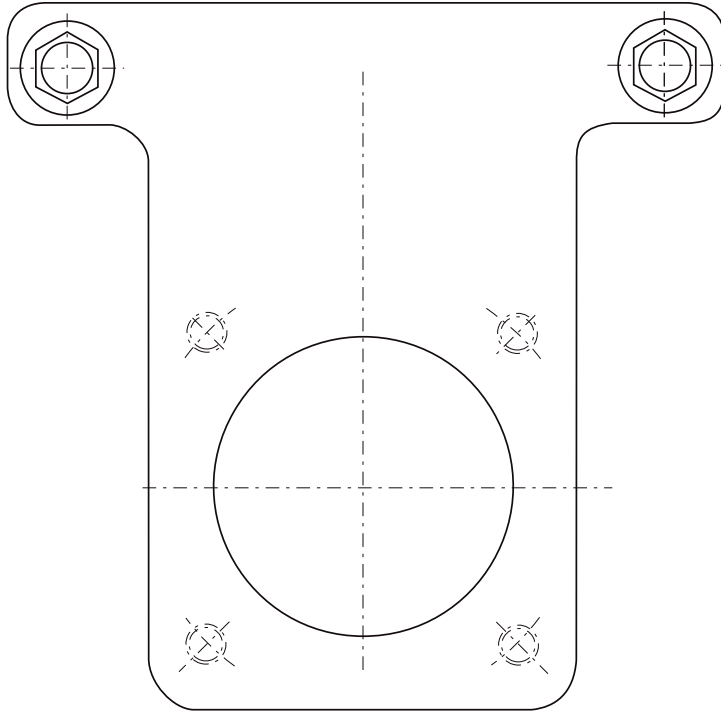
Pos	Teil-Nummer Part-Number	Stück Piece	Beschreibung Description	Benennung Designation	Designation				
9	16 277 16 11 0	1	SA-. 67 46	z=80	Zahnrad	Toothed wheel			
		1	SA-. 67 44						
		1	SA-. 67 40						
	16 277 15 11 0	1	SA-. 67 38	z=73					
		1	SA-. 67 42						
		1	SA-. 67 36						
	16 277 14 11 0	1	SA-. 67 34	z=64					
		1	SA-. 67 32						
		1	SA-. 67 30						
		1	SA-. 67 28						
	10	560 020 0	2	6305			DIN 625	Rillenkugellager	Grooved ball bearing
	11	16 277 10 19 0	1	SA-. 67 46			z=15	Ritzelwelle	Pinion
1			SA-. 67 44						
1			SA-. 67 40						
16 277 11 19 0		1	SA-. 67 38	z=22					
		1	SA-. 67 42						
		1	SA-. 67 36						
16 277 12 19 0		1	SA-. 67 34	z=31					
		1	SA-. 67 32						
		1	SA-. 67 30						
		1	SA-. 67 28						
12		34 255 00 39 0	1	SA-. 67 26		Ölleitring	Oil splash ring		
13	16 277 11 11 0	1	SA-. 67 46	z=125	Zahnrad	Toothed wheel			
		1	SA-. 67 44						
		1	SA-. 67 42						
	16 277 12 11 0	1	SA-. 67 40	z=80					
		1	SA-. 67 38						
		1	SA-. 67 36						
		1	SA-. 67 34						
		1	SA-. 67 32						
		1	SA-. 67 30						
		1	SA-. 67 28						
16 277 13 11 0	1	SA-. 67 26	z=51						
	1	SA-. 67 26							
14	506 812 0	1	29x1,5	DIN 471	Sicherungsring	Circlip			
15	560 208 0	1	NJ 206 EC	DIN 5412	Zyl-Rollenlager	Roller bearing			
16	16 277 18 11 0	1	SA-. 67 46	z=78	Zahnrad	Toothed wheel			
		1	SA-. 67 42						
		1	SA-. 67 40						
	16 277 17 11 0	1	SA-. 67 36	z=75					
		1	SA-. 67 32						
		1	SA-. 67 28						
		1	SA-. 67 44						
		1	SA-. 67 38						
		1	SA-. 67 34						
		1	SA-. 67 30						
17	503 912 0	4	AM16x1,5	DIN 7604	Verschlussschraube	Screw plug			
18	515 004 0	5	C16x20	DIN 7603	Dichtring	Sealing ring			
19	500 237 0	10	M10x90	ISO4762-8.8	Zyl-Schraube	Socket head cap screw			
20	506 904 0	10	10	DIN 7980	Federring	Spring washer			
21	32 250 00 57 0	1			Verschlussschraube	Screw plug			
22	504 969 0	2	10m6x40	ISO 2338	Zyl-Stift	Dowel pin			



Originalteile
Original parts
SHW 8

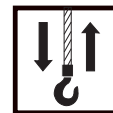
STAHL
CraneSystems

Drehmomentstütze / torque support
SA-C 57
OE-S 10

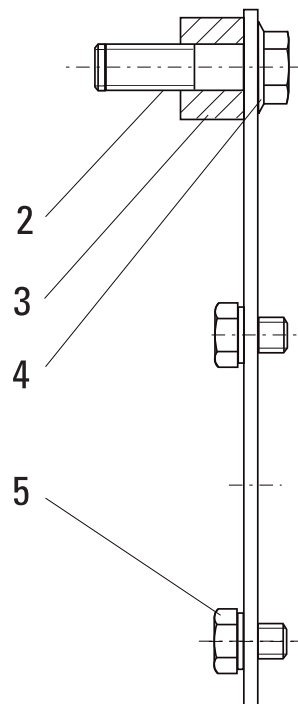
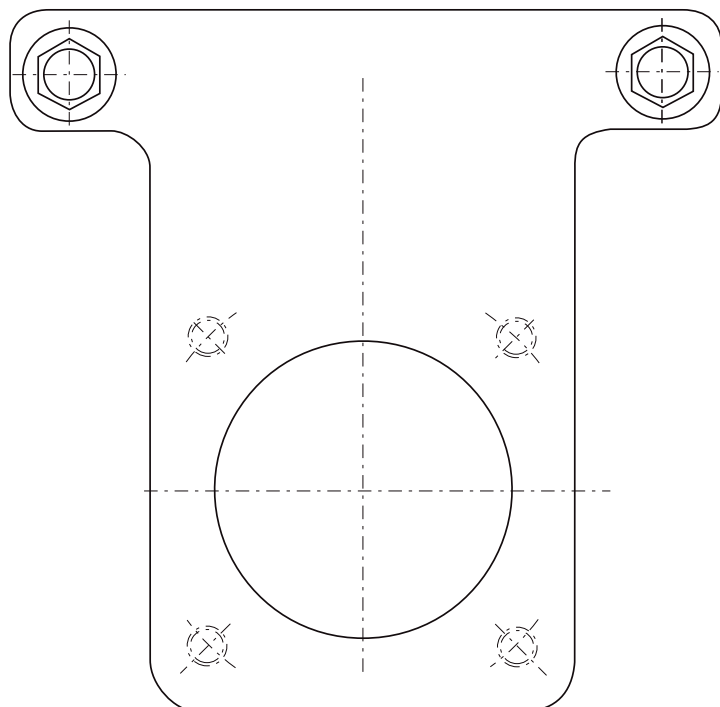


W0836

Pos	Teil-Nummer Part-Number	Stück Piece	Beschreibung Description	Benennung	Designation
	15 270 03 22 0	1	SA-. 5 (Pos.2-5)	Drehmomentstütze	Torque support
1	507 840 0	2	M12	Sicherungsmutter	Safety nut
2	500 356 0	2	M12x70 EN 24014-8.8	Skt-Schraube	Hexagon head cap screw
3	15 277 02 52 0	2	30/13/26	Buchse	Bushing
4	507 104 0	2	SKM 12	Sperrkantscheibe	Disc
5	501 122 0	4	M12x25-10	Sicherungsschraube	Safety bolt



Drehmomentstütze / torque support
SA-C 57
OE-S 99



W0836a

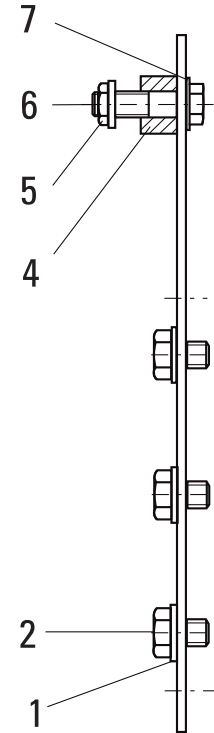
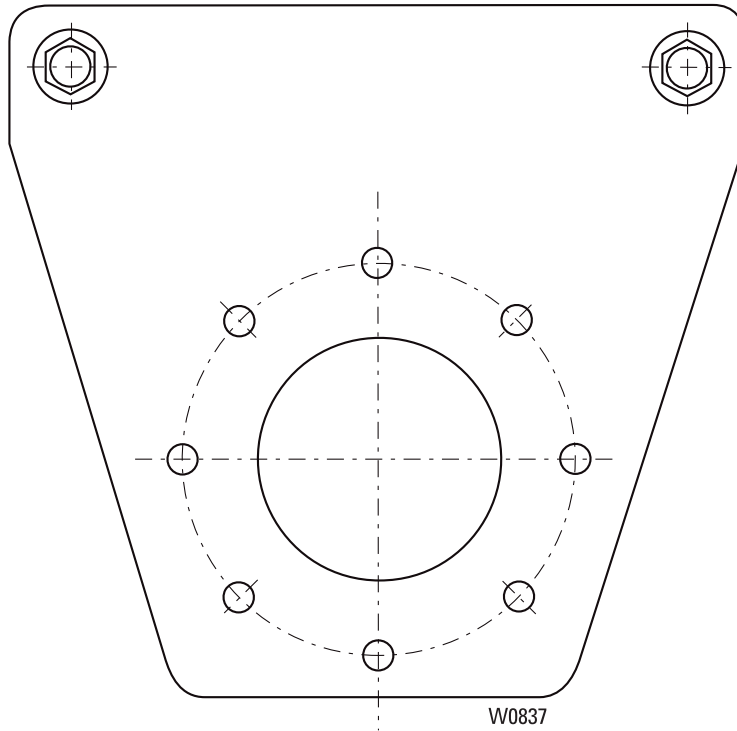
Pos	Teil-Nummer Part-Number	Stück Piece	Beschreibung Description	Benennung	Designation
	15 270 09 22 0	1	SA- 5 (Pos.2-5)	Drehmomentstütze	Torque support
2	500 208 0	2	M12x65 EN 24014-8.8	Skt-Schraube	Hexagon head cap screw
3	15 277 03 52 0	2	30/13/44	Buchse	Bushing
4	507 104 0	2	SKM 12	Sperrkantscheibe	Disc
5	501 122 0	4	M12x25-10	Sicherungsschraube	Safety bolt



Originalteile
Original parts
SHW 8

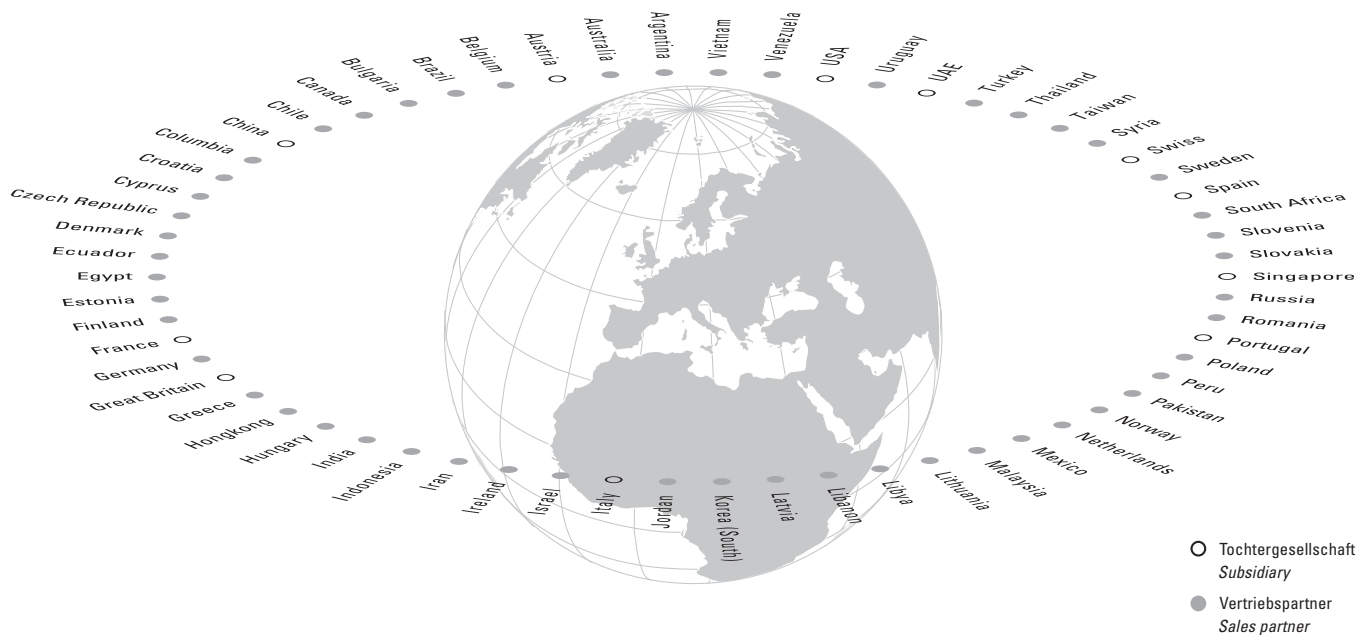
STAHL
CraneSystems

Drehmomentstütze / torque support
SA-C 67



Pos	Teil-Nummer Part-Number	Stück Piece	Beschreibung Description	Benennung	Designation
	16 270 00 22 0	1	(Pos.1-7)	Drehmomentstütze	Torque support
1	562 953 0	6	16 DIN 6797	Spannscheibe	Disc
2	500 337 0	6	M16x30 ISO 4017-8.8	Skt-Schraube	Hexagon head cap screw
4	16 277 01 52 0	2	40/17/22	Buchse	Bushing
5	507 841 0	2	M16	Sicherungsmutter	Locknut
6	500 213 0	2	M16x70 ISO 4014-8.8	Skt-Schraube	Hexagon head cap screw
7	562 953 0	2	16 DIN 6797	Spannscheibe	Disc





○ **Tochtergesellschaft/Subsidiary**

Austria
Steyregg
Tel +43 732 641111-0
Fax +43 732 641111-33
office@stahlcranes.at

Great Britain
Birmingham
Tel +44 121 7676400
Fax +44 121 7676485
info@stahlcranes.co.uk

Portugal
Lissabon
Tel +351 21 44471-60
Fax +351 21 44471-69
ferrometal@ferrometal.pt

Switzerland
Däniken
Tel +41 62 82513-80
Fax +41 62 82513-81
info@stahlcranes.ch

China
Shanghai
Tel +86 21 6257 2211
Fax +86 21 6254 1907
service_cn@stahlcranes.cn

India
Chennai
Tel +91 44 4352-3955
Fax +91 44 4352-3957
indiasales@stahlcranes.in

Singapore
Singapore
Tel +65 6271 2220
Fax +65 6377 1555
sales@stahlcranes.sg

United Arab Emirates
Dubai
Tel +971 4 805-3700
Fax +971 4 805-3701
info@stahlcranes.ae

France
Paris
Tel +33 1 39985060
Fax +33 1 34111818
info@stahlcranes.fr

Italy
S. Colombano
Tel +39 0185 358391
Fax +39 0185 358219
info@stahlcranes.it

Spain
Madrid
Tel +34 91 484-0865
Fax +34 91 490-5143
info@stahlcranes.es

USA
Charleston, SC
Tel +1 843 767-1951
Fax +1 843 767-4366
sales@stahlcranes.us

● **Vertriebspartner/Sales partner**

Die Adressen von über 100 Vertriebspartnern weltweit finden Sie im Internet auf www.stahlcranes.com unter Kontakt.
You will find the addresses of over 100 sales partners on the Internet at www.stahlcranes.com under Contact.

➔ www.stahlcranes.com

STAHL CraneSystems GmbH, Daimlerstr. 6, 74653 Künzelsau, Germany
Tel +49 7940 128-0, Fax +49 7940 55665, marketing@stahlcranes.com

