


# The Physical Environment Portal:

A collaboration between The Joint Commission  
and The American Society for Healthcare Engineering



The portal is a collection of online resources and tools to help hospitals comply with the 8 most challenging Joint Commission Life Safety (LS) and Environment of Care (EC) standards.

The portal is available free to the public on The Joint Commission website, with links to solutions from ASHE and Joint Commission Resources. Joint Commission-accredited organizations have access to additional resources, such as surveyor comments.

[www.jointcommission.org/JCPEP](http://www.jointcommission.org/JCPEP)



Each standard is highlighted in 2-month modules. The first month features information for facilities managers; the second month focuses on strategies for leadership and clinical impact.

## The standards to be covered are:

### Utility Systems

EC.02.05.01 (Aug/Sept 2015)



### Means of Egress

LS.02.01.20 (Oct/Nov 2015)



### Built Environment

EC.02.06.01 (Dec/Jan 2015/16)



### Fire Protection

EC.02.03.05 (Feb/March 2016)



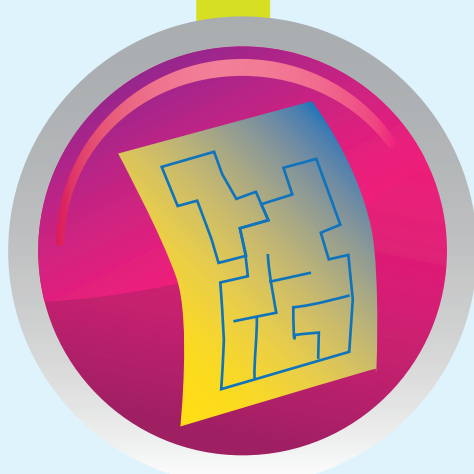
### General Requirements

LS.02.01.10 (April/May 2016)



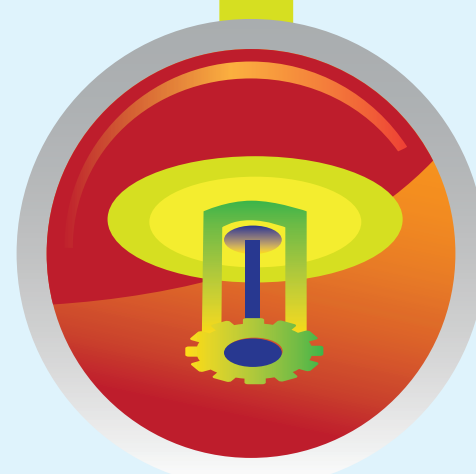
### LS Protection

LS.02.01.30 (June/July 2016)



### Automatic Suppression Systems

LS.02.01.35 (Aug/Sept 2016)



### Haz Mat/Waste Management

EC.02.02.01 (Oct/Nov 2016)

